



Advanced Medical Solutions

**INTEGUSEAL®**

# Protect with Confidence

INTEGUSEAL® Microbial Sealant immobilizes dangerous pathogens, making surgical site infections one less worry

## Key Features



Dries in as fast as 2 mins\*



Naturally sloughs off in 5-7 days\*



Compatible with a variety of prep solutions\*



Water resistant



Breathable



Easily applied along body contours



Does not promote bacterial resistance



Effective microbial barrier



Safe and convenient in clinical settings



Ergonomic Applicator

N-Butyl Cyanoacrylate-Based Microbial Sealant

Foam Tip



**Effective against common and dangerous skin pathogens frequently responsible for SSIs**

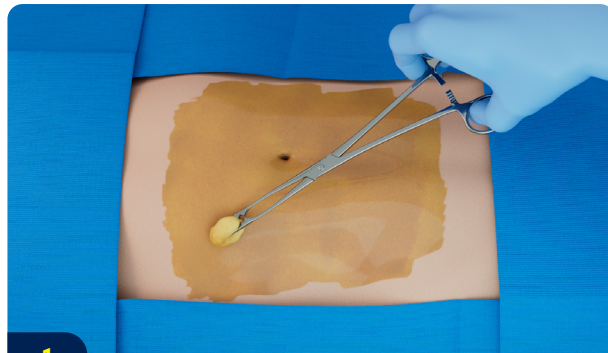
INTEGUSEAL® Microbial Sealant significantly reduced the recovered amounts of MRSA by 99.9%, *S. epidermidis* by 99.5%, and *E. coli* by approx. 96% in an *in-vitro* surgical incision model<sup>1</sup>.

Product Code	Coverage Area
IS100	25x25cm or 10x10in*
IS200	50x25cm or 20x10in*



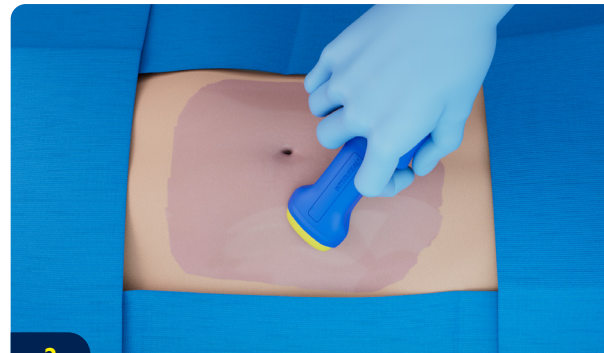
**Instructions For Use**

For comprehensive application instructions and product information, please refer to the Instructions for Use.



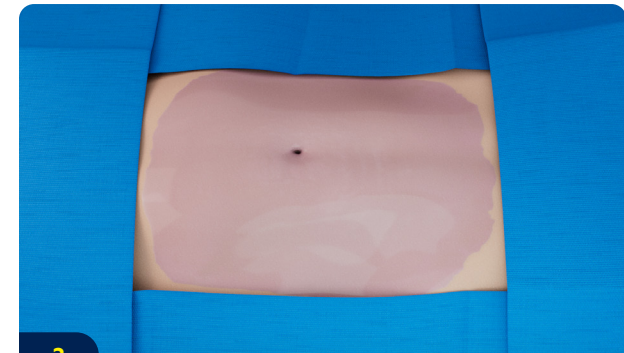
1

**PREP:** INTEGUSEAL® Microbial Sealant is compatible with a variety of prep solutions.\* Always allow prep to dry before applying INTEGUSEAL® Microbial Sealant.



2

**SEAL:** With the foam tip facing downward, activate by pressing the end of the applicator until completely expressed. Use immediately to paint an even, continuous layer over the entire exposed area with no breaks between strokes.



3

**DRAPE:** Allow INTEGUSEAL® Microbial Sealant to dry and then apply drapes as normal. Can be used with standard surgical drapes or incise drapes.

\* Please refer to the product's Instructions for Use for full product information.  
<sup>1</sup> All data on file at Advanced Medical Solutions Limited. IRM 06 0353 01

