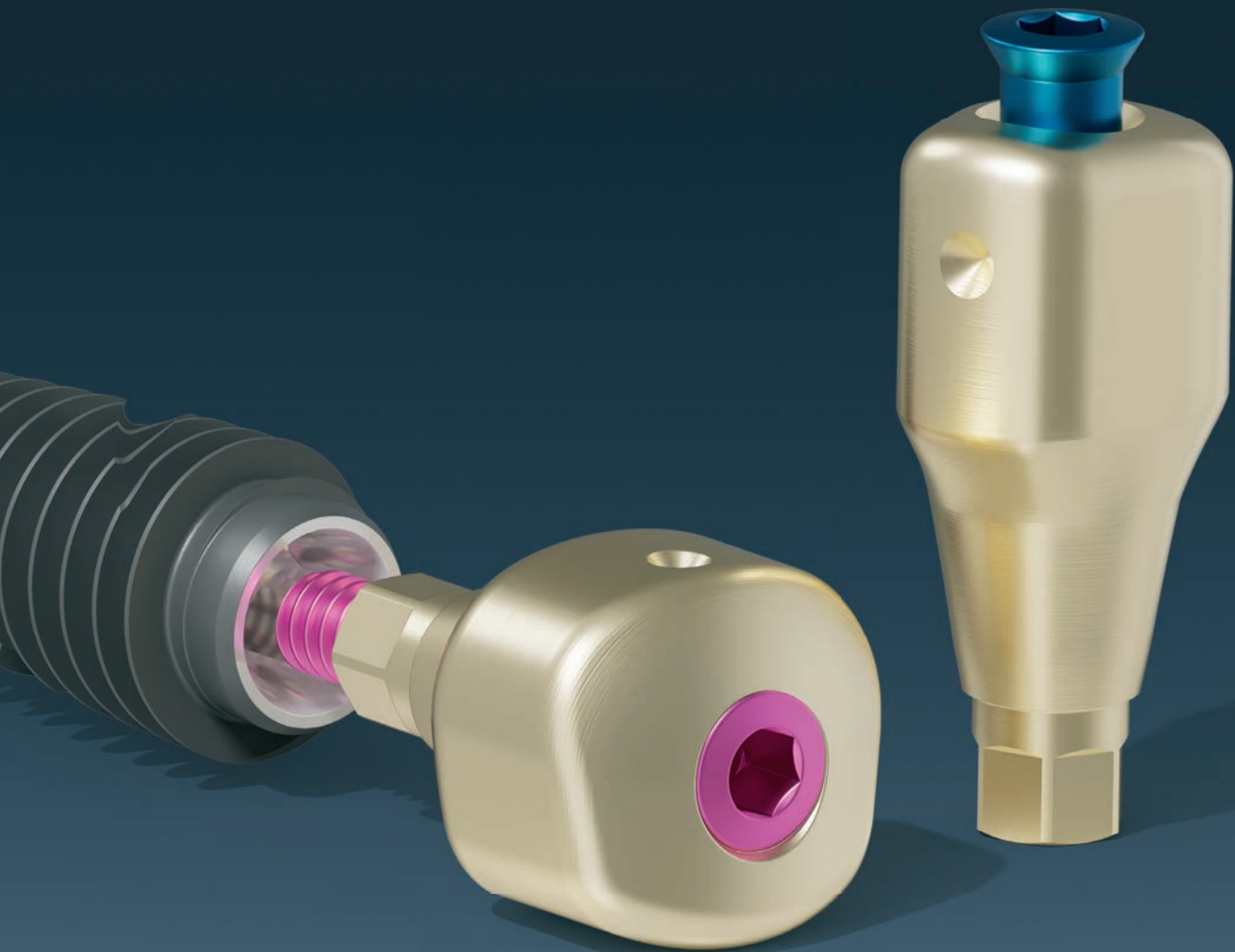


PROFILE DESIGNER

i physio[®]

THE ADVANCED PROCEDURE IN IMPLANTOLOGY



LYRAETK
DIGITAL DENTAL PROTOCOLS
Simple • Safe • Accessible

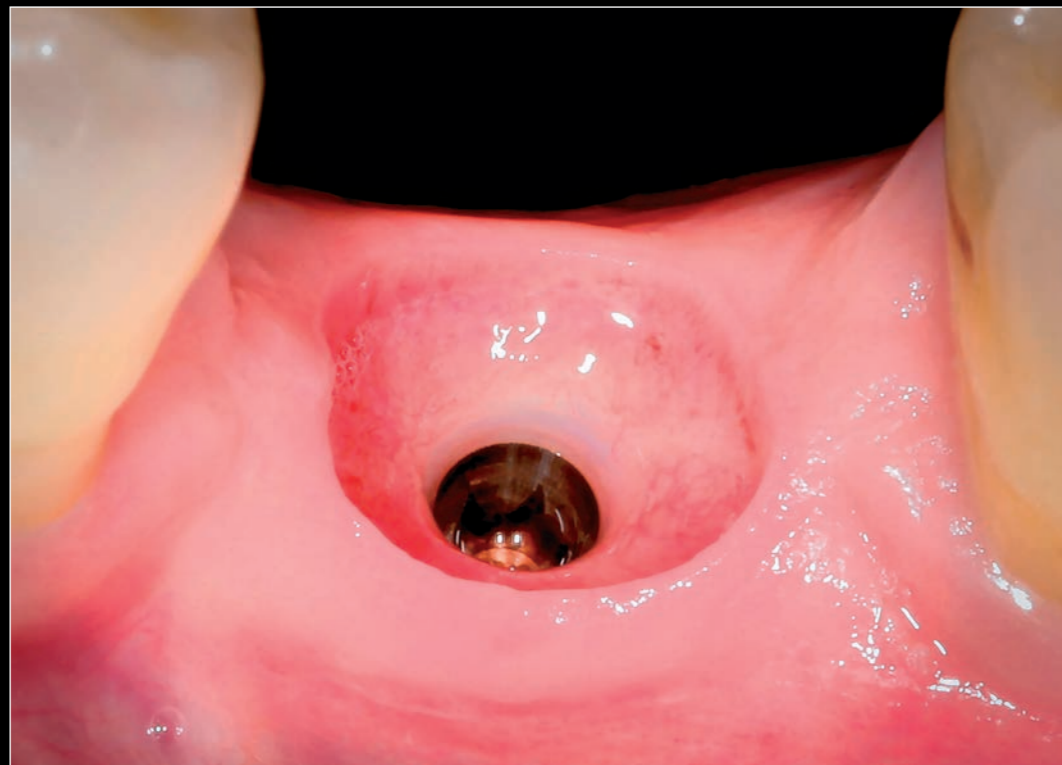


PROFILE DESIGNER
iphysio[®]

The new-generation protocol that improves the outcome of your implant treatment while simplifying it. Result of a synthesis of LYRA ETK's expertises in implantology and digital technology, this anatomical 3-in-1 solution - healing abutment, scanbody and temporary abutment - is the central and unique element of a simplified no-disassembly protocol, from healing to prosthesis. The result is improved biological integration, making the treatment more durable and improving the aesthetic result. It can be used with most implant systems.



THE GLOBAL SOLUTION FOR OPTIMIZED IMPLANT TREATMENT



Clinical case and pictures by Dr Jacques Cheylus

SIMPLE



1 single piece | 1 single step

3 in 1

- > Healing
- > Impression
- > Temporary prosthesis



Without disassembly

4 steps instead of 7



Physical or Digital Impressions



Time saving
Up to 20 mn per implant



Temporization
SSA

SAFE



Antibacterial shield
Protected connection

Zirconia coating

Prevents tissue inflammation



Concave profile

Increase soft tissues



Convex profile

supports the papillae and the gum line



Ensures the emergence profile



Upgrade
YOUR implant

ACCESSIBLE



Two parts less
(scanbody, temporary abutment)

UNIVERSAL

- > Compatible with your implants, interfaces and screwdrivers
- > All intra-oral CT scanners, all software, all laboratories



Codified protocol



Training and support



Your trained and certified laboratory



iPHYSIO® : THE BIO-LOGICAL APPROACH



1

PROSTHETIC PROJECT

Emergence profile, biological space and contact points.

2

PLANNING

Ideally position your implant subcrestally (Umbrella concept, Alberto Miselli) to save the biological space.

3

INCISIONS AND DRILLING

Limited flap technique (Dennis Tarnow) to preserve the papillae then insertion of your implant.

4

IPHYSIO® SELECTION

Choose the shape and height for tissue support and biological space using the selector and the iPhysio® Try In Profile Designer Kit.

5

PHYSIO® POSITIONING

Option: Poncho technique with PRF or membrane (improves healing).

6

SUTURES

Mattress stitches
Options : Temporary prosthesis directly on iPhysio® or SSA

7

IMPRESSION ON IPHYSIO®

Physical or digital.

8

FINAL PROSTHESIS

On interfaces of your abutment system, matching the iPhysio® profile chosen.

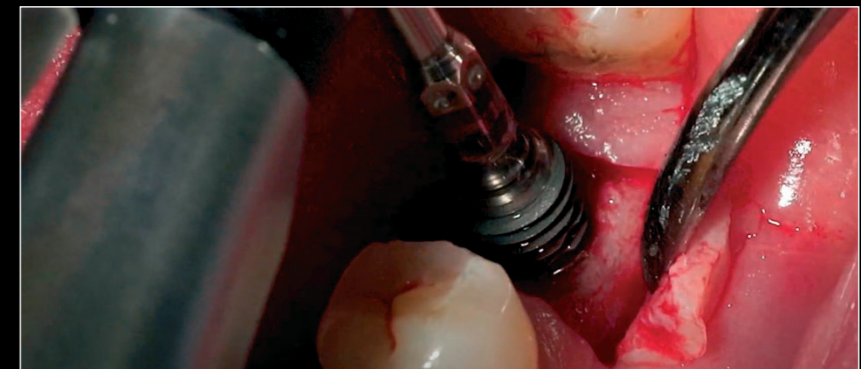
9

IPHYSIO® REMOVAL

And insertion of the prosthesis into its prosthetic bed without compression or anaesthesia



SCIENTIFIC REFERENCES



Clinical case and pictures by Dr Jacques Cheylus

PROTOCOL WITHOUT DISASSEMBLY

1 SINGLE PIECE, 1 SINGLE STEP

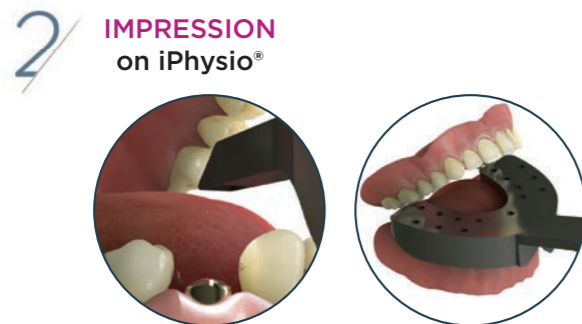
The iPhysio® Profile Designer is screwed into the implant during the 1st or the 2nd surgical step. It remains in place throughout the bone and gingival healing process as well as during the impression irrespective of the implant sector, whether aesthetic or not. It is only removed once to place and finally screw in the final restoration.

THE 3-IN-1 SOLUTION

REPLACES YOUR HEALING ABUTMENTS, SCANBODIES, IMPRESSION COPINGS AND TEMPORARY ABUTMENTS



Its anatomical shape perfectly matches the morphology of the teeth to be replaced. Its zirconium nitride-coated surface provides optimum healing conditions by repelling bacteria.



The connection is not exposed, and the tissue are preserved. In both digital and conventional techniques, impressions on iPhysio® also avoid inaccurate positioning linked to the impression coping or scanbody placement. The implant position is restored in a very accurate manner.

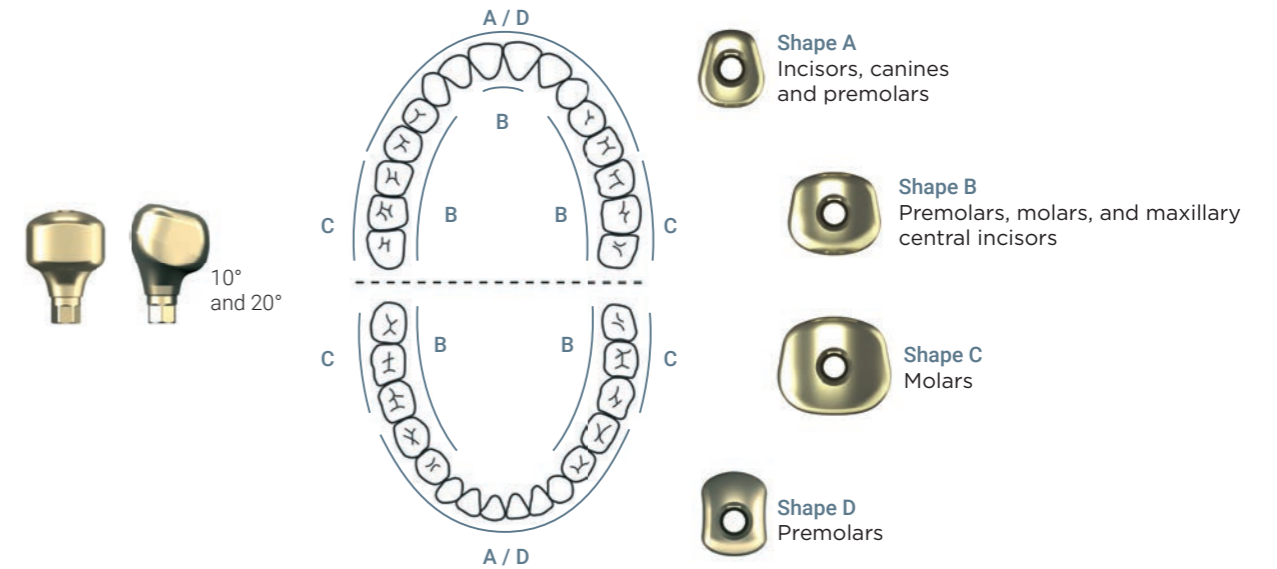


Based on iPhysio®, it continues the shaping of the prosthetic bed until the placement of the final prosthesis.

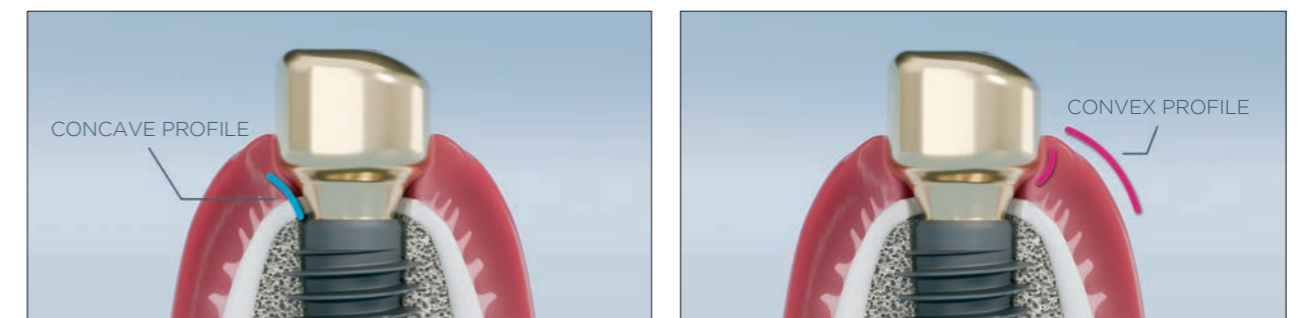
ANATOMICAL AND CONSERVATIVE

4 SHAPES AND 2 ANGULATIONS

Teeth are not round...  ... neither is iPhysio®. 

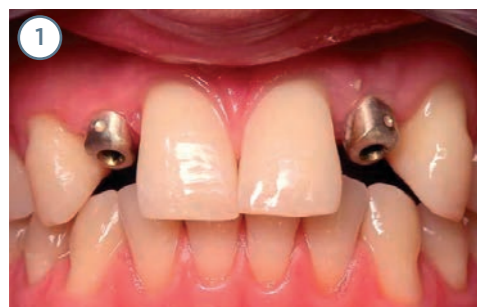


CONCAVE CONVEX PROFILE



- Increased soft tissue thanks to concave profile; creates a biological seal for greater bone stability.
- Maintains biological space thanks to convex profile that supports papillae and gingival line.

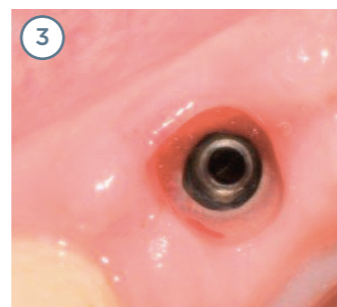
Clinical case by Dr Camille Reymond and Lionel Cuvier for the Artésia laboratory in Grenoble



iPhysio® in the gingival healing phase



iPhysio® digital impression



Anatomical prosthetic bed after healing with iPhysio®



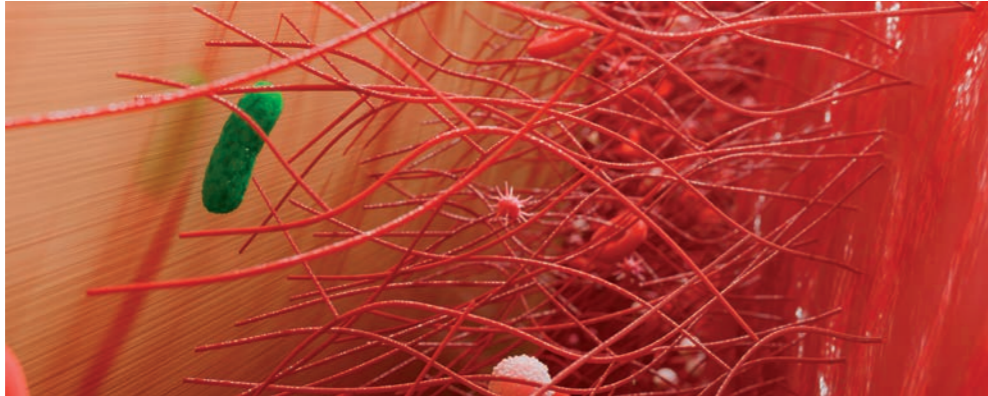
Temporary abutments on iPhysio®



Final restoration

ANTIBACTERIAL SHIELD

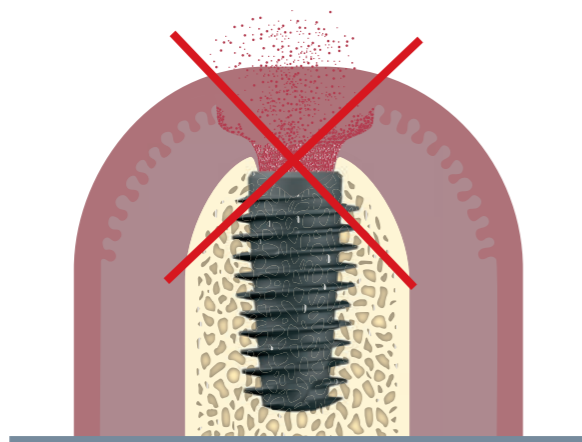
ZIRCONIUM NITRIDE-COATED TITANIUM



- Limits bacterial plaque attachment
- Reduces soft tissue inflammation

CONNECTION PROTECTION

By remaining in place, iPhysio® protects the implant connection. No risk of contamination of the implant site due to parts removal.



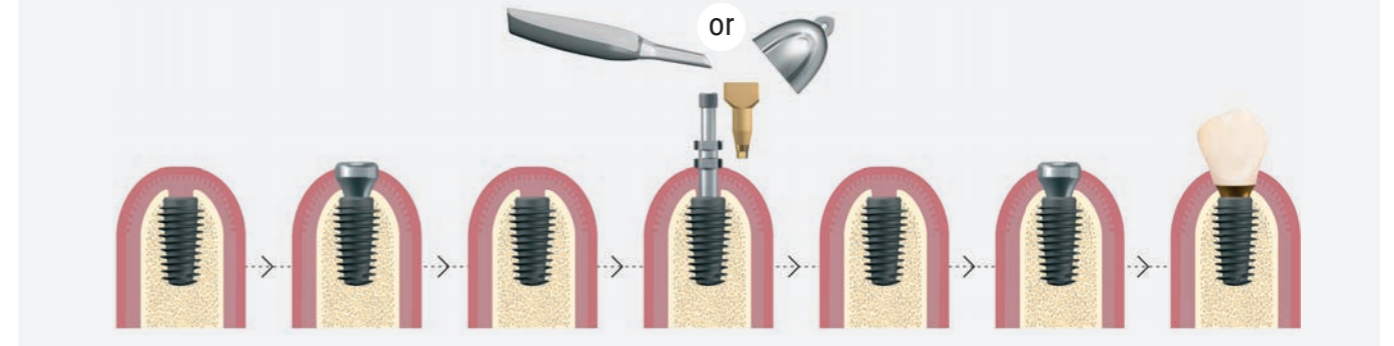
Pictures by Dr Thibault Andéol and Dr Jacques Cheylus



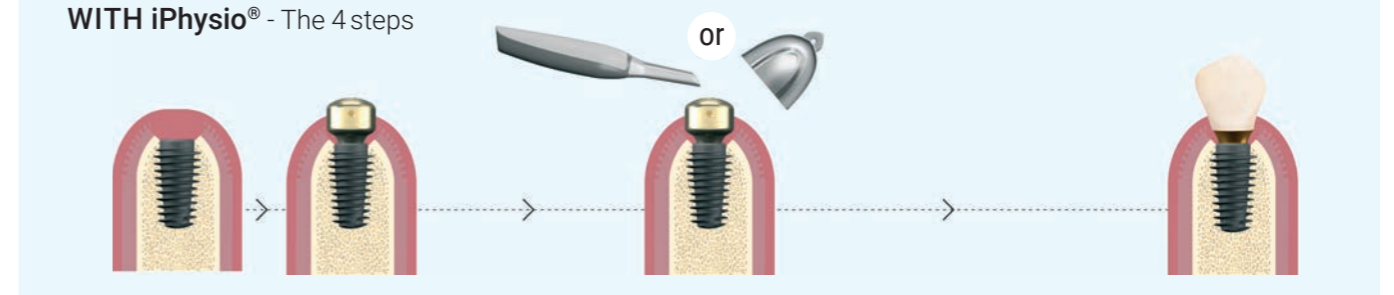
REDUCED CHAIR TIME

4 STEPS INSTEAD OF 7

WITHOUT iPhysio® - The 7 steps of the classic protocol

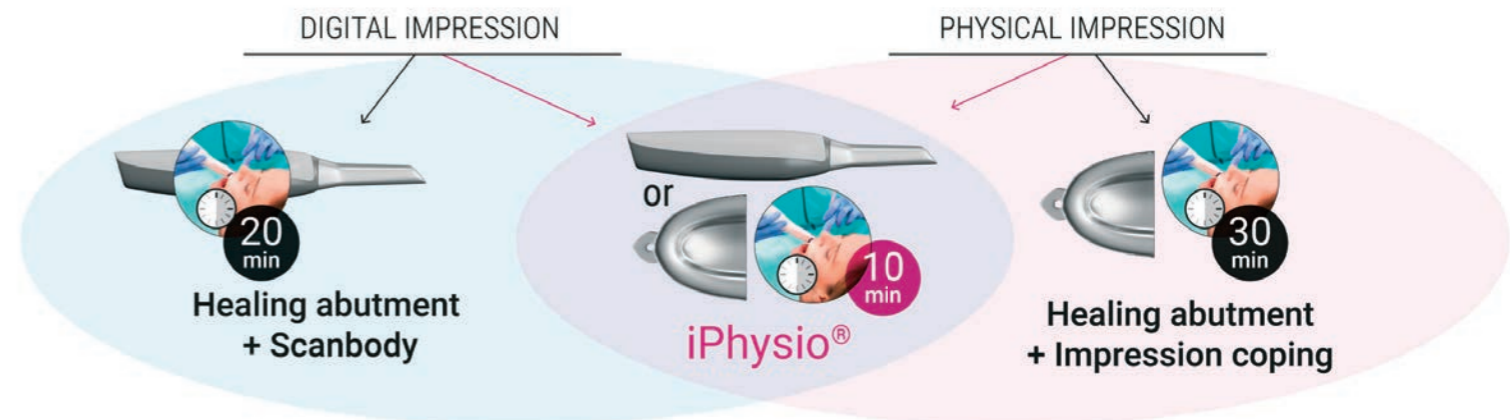


WITH iPhysio® - The 4 steps



IMPRESSION IS 2 TO 3 TIMES FASTER

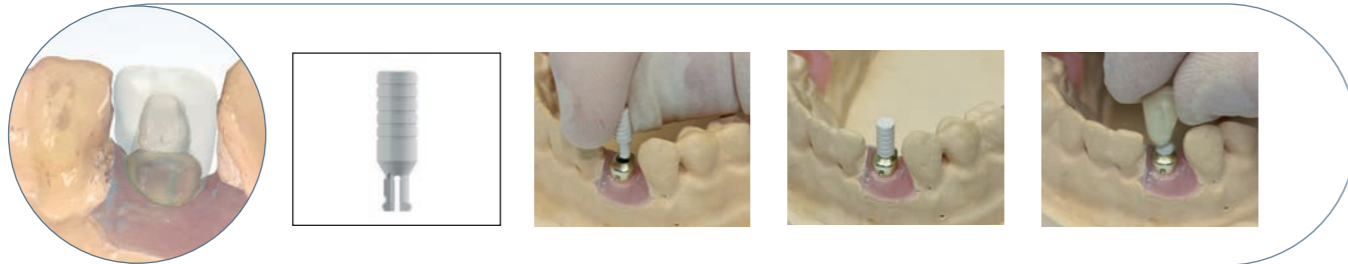
- No part handling



TEMPORIZATION

TEMPORARY PROSTHESIS

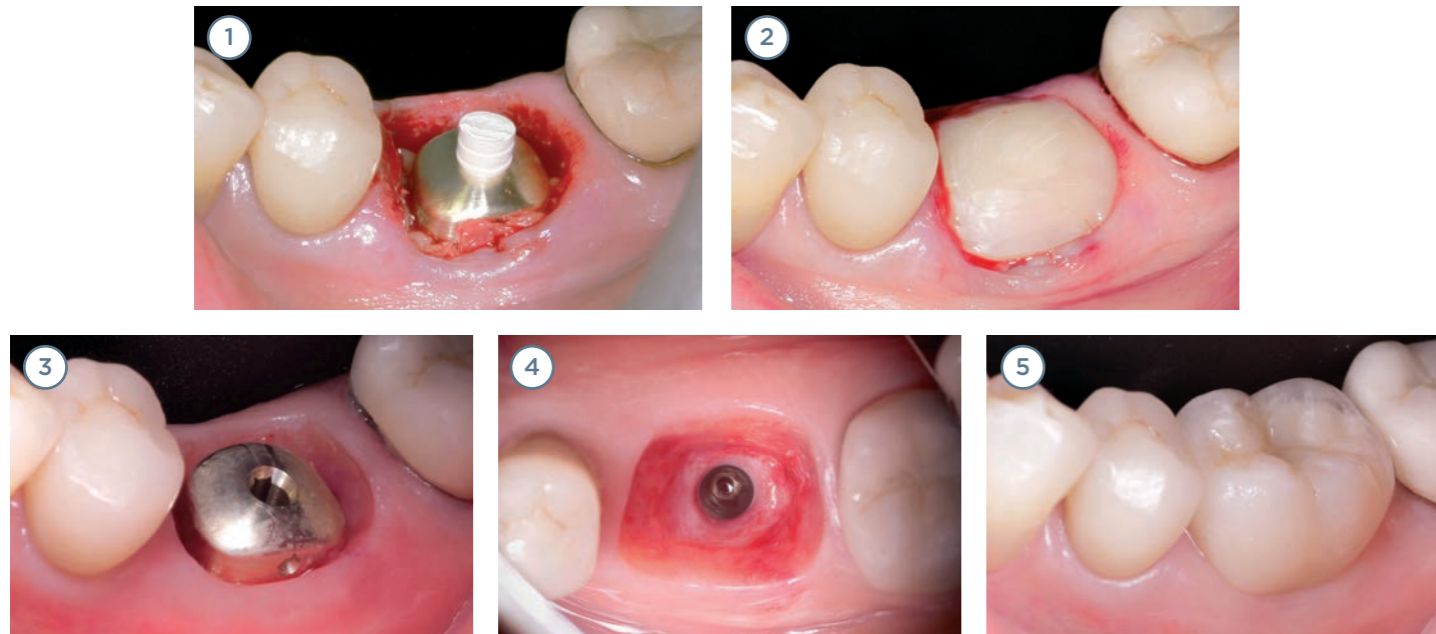
The temporary abutment clips on to iPhysio® to support the temporary prosthesis.



- The clip-on temporary abutment is sufficiently retentive to hold the temporary crown. It withstands a tensile force of approximately 15N (1.5 kg) when unclipped.
- The temporary abutment also acts as a fuse, meaning that it unclips if the force exerted is too great, helping to preserve implant stability.

OPTIMIZES SSA

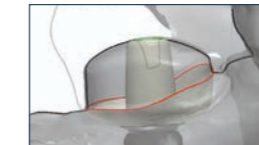
Clinical case and pictures by Dr Jacques Cheylus



ENSURES THE EMERGENCE PROFILE

When making the final prosthesis, the iPhysio® protocol makes it easy to reproduce the tissue conformation obtained by recovering the emergence profile, guaranteeing an esthetic and long-lasting result.

EMERGENCE PROFILE TRANSMITTED BY THE IMPRESSION

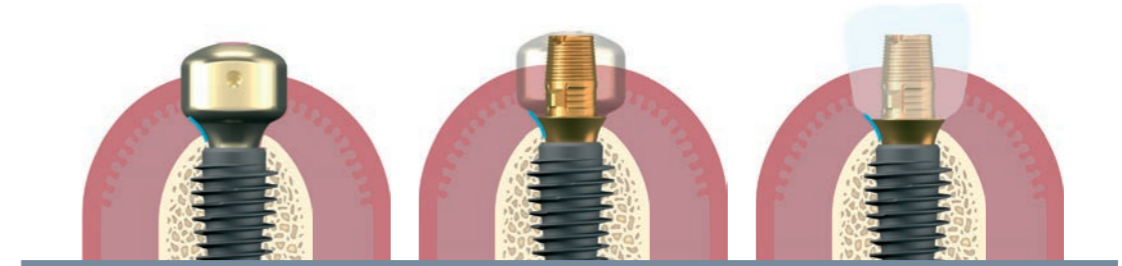


iPhysio® is compatible with most computer aided design software.

3shape  exocad

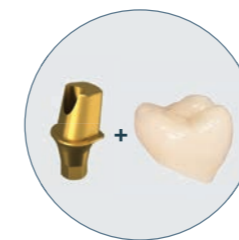
EMERGENCE PROFILE INTEGRATED BY THE INTERFACE

The iPhysio® protocol determines the interfaces for each implant system corresponding to each iPhysio® shape and height, in order to maintain the emergence profile until the final prosthesis.

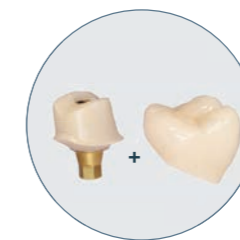


The continuity of the anatomical emergence profile is ensured right through to the final prosthesis, even when the surgeon carries out the treatment plan with another dentist.

PROSTHETIC SOLUTIONS



Sealed prosthesis on anatomical titanium abutment



Sealed prosthesis on anatomical zirconia abutment (with interface)



Trans-screwed prosthesis direct implant (with interface)



UNIVERSAL PROTOCOL COMPATIBLE WITH YOUR WORKING HABITS

UPGRADE YOUR IMPLANT

- iPhysio® is a universal protocol that can be used with most implant brands.
- A compatibility guide identifies the interface for each iPhysio® shape/height in each implant system. This ensures that the warranty on implants and prosthetic parts remains valid.
- You don't have to change your working habits; iPhysio® does not require the purchase of additional parts.



EXISTS FOR
THE MAIN IMPLANTS



CAN BE USED WITH
THE INTERFACES OF MOST
IMPLANT SYSTEMS



CAN BE USED WITH
THE SCREWDRIVERS
OF MOST IMPLANT SYSTEMS



CAN BE USED
WITH ALL SCANNERS
AND SOFTWARE

HAVE A LOOK AT
THE COMPATIBILITY
GUIDE



LET US GUIDE YOU!

Find out about all the tools available to help you use iPhysio® in your practice.



MADE IN FRANCE



- LYRA ETK is the French medtech company specializing in dental restoration.
- It integrates traditional implantology and new digital technologies to offer functional and aesthetic restorative solutions.
- LYRA ETK offers simple, safe and accessible digital dental protocols for the benefit of dentists, laboratories and patients.



PROFILE DESIGNER
iphysio®

www.iphysio.dental | info@lyraetk.com | Tél. +33(0) 1 76 42 00 60

 EUROTEKNIKA S.A.S - 726 rue du Général de Gaulle, 74700 Sallanches (France)

Medical devices and procedure pack (combination of medical devices) of Class I, in compliance with European Regulation MDR (EU) 2017/745 (CE marking) and IIa and IIb medical devices in compliance with European Regulation MDR (EU) 2017/745 (CE 0459 marking) and/or European Directive 93/42/EEC (CE 0425 marking). Devices not reimbursed by National Insurance; they must be used by oral health professionals. Please read the instructions and user manual or operating technic carefully.

depliant_iphysio_GB_i07_2024_07

LYRAETK
DIGITAL DENTAL PROTOCOLS

Simple . Safe . Accessible