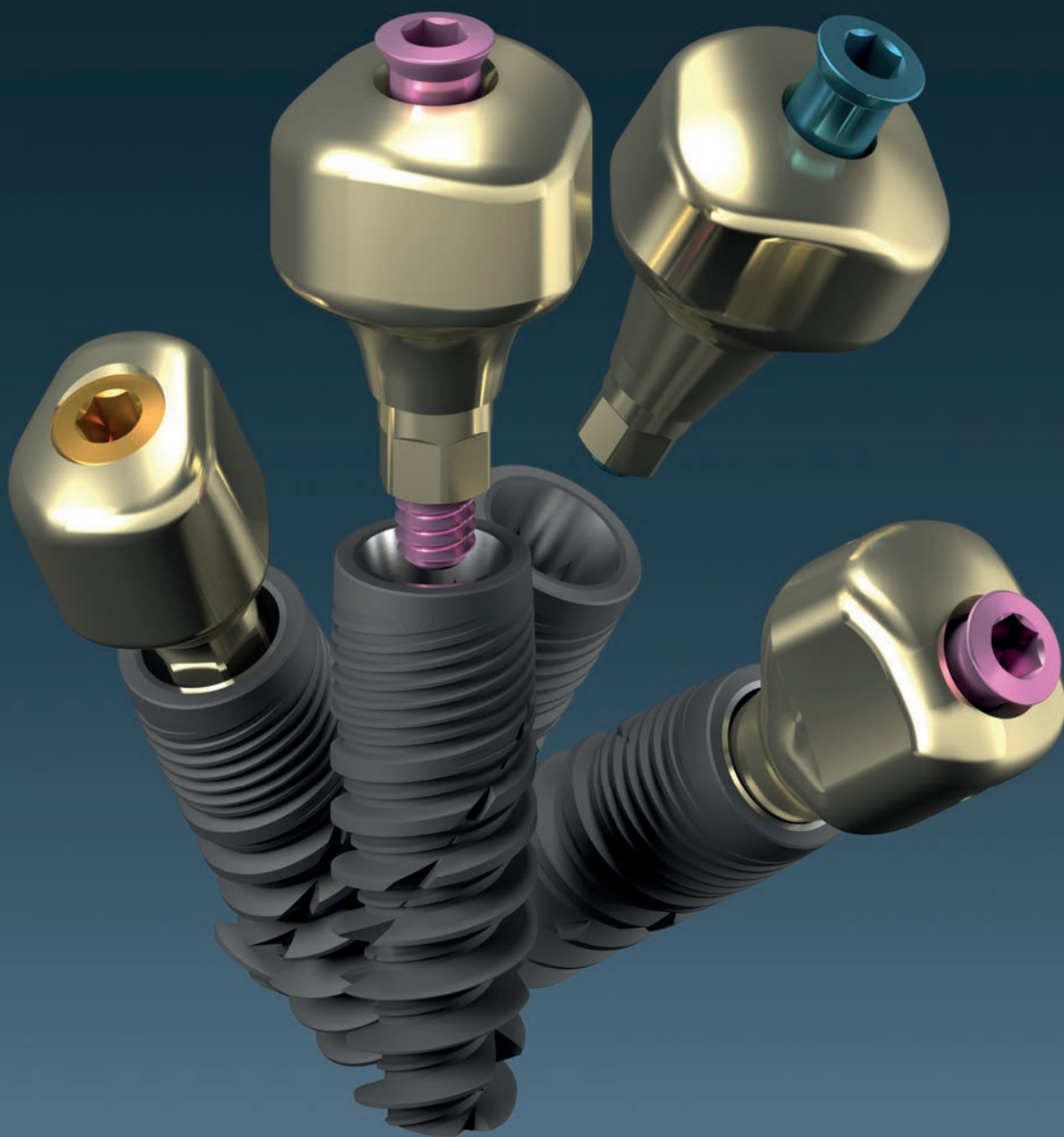


# RANGES AND REFERENCES

PROFILE DESIGNER

i physio<sup>®</sup>



# SUMMARY



## IPHYSIO® SOLUTION

THE IPHYSIO® RANGE.....	p.3
TEMPORARY PROSTHESIS.....	p.3
SCREWDRIVER.....	p.4
IPHYSIO® GRIPPER.....	p.4
ESTHETIBASE INTERFACE.....	p.4
PRE-MILLED.....	p.4
STARTER KIT.....	p.5
PREMIUM KIT.....	p.5
YOUR IPHYSIO® READY LABORATORY.....	p.5

## COMPATIBLE IMPLANT BRANDS

ETK®.....	p.6
AB Dental®.....	p.8
Alpha-Bio Tec®.....	p.9
Anthogyr®.....	p.10
Astra Tech®.....	p.11
BioHorizons®.....	p.13
Biotech Dental®.....	p.14
Easy Implant®.....	p.15
Global D®.....	p.17
Implant Direct™.....	p.18
MIS®.....	p.19
Nobel Biocare®.....	p.20
Straumann®.....	p.21
Zimmer Biomet®.....	p.23

# IPHYSIO® THE 3 IN 1 SOLUTION

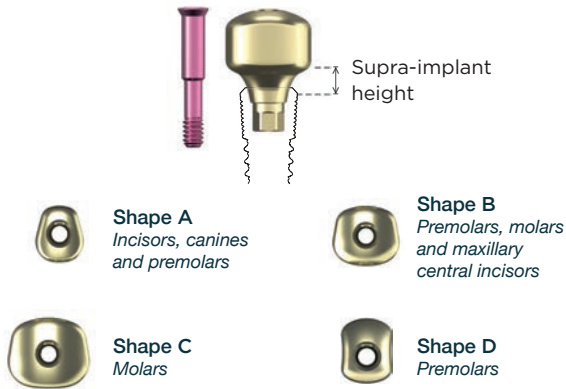
One piece, for the entire implant protocol

Use for healing, impression and temporary prosthesis

No disassembly of the part from the healing to the prosthesis

## IPHYSIO® PROFILE DESIGNERS

- Single use
- Supplied with a coloured attachment screw compatible with the external hexagonal keys of 1.2 mm



## SHORT IPHYSIO® PROFILE DESIGNERS

- Single use
- Supplied with a coloured attachment screw compatible with the external hexagonal keys of 1.2 mm



Ideal for irregular crest and low occlusal height. The Short iPhysio® are available in the iPhysio® ETK® range.

## ANGULATED IPHYSIO PROFILE DESIGNERS®

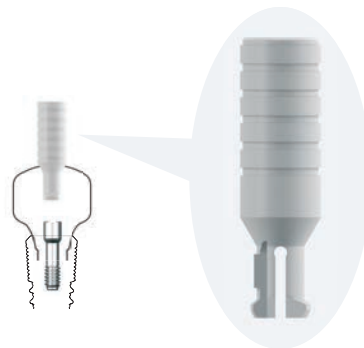
- Single use
- Supplied with a coloured attachment screw compatible with the external hexagonal keys of 1.2 mm



Its specific shape allows to treat the most complex cases thanks to a 10° or 20° axis adjustment of 10° or 20°.

## TEMPORARY PROSTHESIS

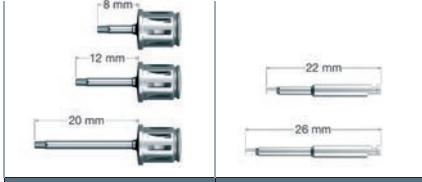
- Clippable
- Supplied with a grey attachment screw compatible with the external hexagonal keys of 1.2 mm



## KEYS

### A key for all your prosthetic parts.


External hexagonal keys of 1.2 mm, in manual version or contra-angle, for screwing all prosthetic parts in the range iPhysio.



	Manual key	Mandrel
Short (S)	CCL_HE12.18	CMA_HE12.22
Medium (M)	CCL_HE12.22	-
Long (L)	CCL_HE12.30	CMA_HE12.26

### An angulated key.

In manual or contra-angle version, allowing to screw the angulated esthetibases only. The screwdriver and the compatible screw are yellow color.



	Manual key	Mandrel
Medium (M)	CCR_HE14.M	-
Long (L)	CCR_HE14.L	CMR_HE14.L

## IPHYSIO® GRIPPER

### iPhysio® gripper

- The iPhysio® gripper allows you to manipulate the iPhysio® Profile Designer easily.
- Compatible with all iPhysio® Profile Designer references.



Reference	CPPI

## BONE PROFILER



Guide screw:  
Réf. NVD\_35

SHAPES B

SHAPES C

NTD35

NFE\_60.52P

## ESTHETIBASE INTERFACES

For CAD-CAM prosthesis (CAD-CAM) in zirconia, PMMA, e.max



Abutment for cemented-retained prosthesis



Screwed retained crown



The esthetibases are delivered individually with its fixing screws. The screw head is compatible with the external hexagonal keys of 1.2 mm.

## PRE-MILLED

- Pre-milled or abutment blanks with pre-fabricated connectors, for the realization of your abutments or abutments in titanium.
- The pre-milled abutments are compatible with the S3DEL® (Mâcon - France) integrated in Work-NC.



The pre-milled are delivered individually with its fixing screws. The screw head is compatible with the external hexagonal keys of 1.2 mm.

## STARTER KITS - Valid only once

The discovery box puts at your disposal all the products necessary to realize your first clinical cases:

- A set of 6 or 9 sterile iPhysio® Profile Designers for single use (one of each shape A, B, C and one of each height)
- 1 iPhysio® try in Profile Designers kit with iPhysio® try in reusable (one of each shape and one of each height)
- iPhysio® temporary clip-in abutment



Compatibility	Reference
Anthogyr® - Axiom® BL REG et PX	CDIAAX
Biotech Dental® - Kontakt®, Kontakt S®	CDIBKO
GlobalD® - In-Kone® Universal et Primo	CDIGIK
Nobel Biocare® - NobelActive®, NobelReplace® CC et NobelParallel® CC - Implant Direct® - InterActive®	CDINCC
Straumann® - Bone Level (BL) et Bone Level Tapered (BLT)	CDISBL
Zimmer Biomet® - Tapered Screw-Vent®, Trabecular Metal / MIS® - SEVEN® et M4® - Implant Direct® - Legacy® / BioHorizons® - Internal, Tapered Internal, Tapered Plus	CDIZSC
Alpha-Bio Tec® - NeO, SPI, I.C.E., DFI, ATID / A.B. Dental® - I2, I22, I5, I55, I10	CDIZSC35
etk® Naturactis, Naturall+, Natea+, Astra Tech® - OsseoSpeed™ TX Ocean/Aqua - Easy Implant® - Master-C, Master-S Ocean	CDIE3N

## PREMIUM KIT

- 2 Implants
- 2 iPhysio® Profile Designers for easy clinical case
- Drills, mandrels and key

Compatibility	Reference
Naturactis	CDIE3NP
iBone S	CDIEISP
iBone E	CDIEIBP
iBone G	CDIEIGP



## YOUR IPHYSIO® READY LABORATORY

You are a dentist :  
Your laboratory can be certified



You are prosthetist :  
become an iPhysio Ready laboratory

- ✓ Expert CAD/CAM laboratories with a perfect skill of digital flow.
- ✓ Laboratories equipped with the iPhysio® library for the design and production of the restoration from your conventional or optical impressions made with all brands of intraoral scanners
- ✓ Laboratories equipped with 3Shape® Dental system or Exocad design software.

Download the library: <https://www.iphysio.dental/en/iphysio-library/>

Get iPhysio Ready certified: <https://www.iphysio.dental/en/iphysio-ready-laboratories/>

### iPhysio® Try In Profile Designer Kit

- To select the height and shape of the Profile Designer iPhysio® for your clinical case
- The kit can be sterilized and reused



Reference	KIE_3N
-----------	--------



### Try in Profile Designer sold per unit

- Can be sterilized and reused

		Shape			
		A	B	C	D
Height 1		NCI_IE.A1	NCI_IE.B1	NCI_IE.C1	NCI_IE.D1
Height 2		NCI_IE.A2	NCI_IE.B2	NCI_IE.C2	NCI_IE.D2
Height 4		NCI_IE.A4	NCI_IE.B4	NCI_IE.C4	NCI_IE.D4
<b>SHORT</b>					
Height 2		-	NCI_IE.B2S	NCI_IE.C2S	--
Height 3		-	NCI_IE.B3S	NCI_IE.C3S	-
<b>ANGULATED</b>					
Height 2	10°	NCI_IE.A2.10	-	-	-
	20°	NCI_IE.A2.20	-	-	-

### Profile Designer iPhysio®

Healing, impression and temporary prosthesis



		Compatible implant system	iPhysio® Profile Designer				Temporary abutment	
			Shape	Height 1	Height 2	Height 3		Height 4
etk®		Naturall+ Ø 3, Naturactis Ø 3	A	-	NCI3_I.A2	-	NCI3_I.A4	NCI3_IPPC
		Naturall+, Naturactis, iBone E, iBone S	A	NCI_I.A1	NCI_I.A2	-	NCI_I.A4	NCI_IPPC
			B	NCI_I.B1	NCI_I.B2	-	NCI_I.B4	
			C	NCI_I.C1	NCI_I.C2	-	NCI_I.C4	
			D	NCI_I.D1	NCI_I.D2	-	NCI_I.D4	
Aesthética+2, iBone G : RP (Ø 4.8)	D	ACI_IR (unique height)				-		
Aesthética+2, iBone G : WP (Ø 6.5)	C	ACI_IW (unique height)				-		
<b>SHORT</b>								
etk®		Naturall+, Naturactis, iBone E, iBone S	B-Short	-	NCI_I.B2S	NCI_I.B3S	-	NCI_IPPC
			C-Short	-	NCI_I.C2S	NCI_I.C3S	-	
<b>ANGULATED</b>								
etk®		Naturall+, Naturactis, iBone E, iBone S	A-10°	-	NCI_I.A2.10	-	-	NCI_IPPC
			A-20°	-	NCI_I.A2.20	-	-	

### Esthetibase interfaces

For the realization of personalized prosthesis (CAD-CAM) in zirconia, PMMA, e.max

Correspondance for the height of the esthetibase					
iPhysio®	Height	1	2	3	4
		Shape	A, B, C and D	A, B, C and D	B and C
Esthetibase height		<b>h 1</b>	<b>h 2</b>	<b>h 3</b>	<b>h 3 h 3 or h 4</b>

Compatible implant system		h 1	h 2	h 3	h 4	Screw
<b>Esthetibase interface for single unit</b>						
etk®	Naturall+ Ø 3, Naturactis Ø 3	-	NPC_PTO30.16	NPC_PTO30.26	-	NVP_31
	Naturall+, Naturactis, iBone E, iBone S	NPC_PTO40.06	NPC_PTO40.16	NPC_PTO40.26	NPC_PTO40.36	NVP_E35
	Aesthética+2, iBone G : RP (Ø 4.8)	APCC_PTO.48	-	-	-	APS_VF20.93
	Aesthética+2, iBone G : WP (Ø 6.5)	APCC_PTO.65	-	-	-	APS_VF20.93

Compatible implant system		h 1	h 2	h 3	h 4	Screw
<b>Angulated esthetibase interface</b>						
etk <sup>®</sup>	10° : Naturall+, Naturactis, iBone E, iBone S	-	NPC_PTOA40.16.10	-	-	NVP_PTOA35
	20° : Naturall+, Naturactis, iBone E, iBone S	-	NPC_PTOA40.16.20	-	-	NVP_PTOA35

Compatible implant system		h 1	h 2	h 3	h 4	Screw
<b>Esthetibase interface for multi unit</b>						
etk <sup>®</sup>	Naturall+, Naturactis, iBone E, iBone S	NPC_PTC40.06	NPC_PTC40.16	NPC_PTC40.26	NPC_PTC40.36	NVP_E35
	Aesthética+ <sup>2</sup> , iBone G : RP (Ø 4.8)	APCC_PTC.48	-	-	-	APS_VF20.93
	Aesthética+ <sup>2</sup> , iBone G : WP (Ø 6.5)	APCC_PTC.65	-	-	-	APS_VF20.93

## Pre-milled

For the realization of your abutments or abutments in titanium.

Compatible implant system		Reference	Screw
etk <sup>®</sup>	Naturall+ Ø 3, Naturactis Ø 3	NPS_PER.31	NVP_31
	Naturall+, Naturactis, iBone E, iBone S	NPS_PER.35	NVP_35
	Aesthética+ <sup>2</sup> , iBone G : RP (Ø 4.8)	APS_PER.48	APS_VF20.93
	Aesthética+ <sup>2</sup> , iBone G : WP (Ø 6.5)	APS_PER.65	APS_VF20.93

**iPhysio® Try In Profile Designer Kit**

- To select the height and shape of the Profile Designer iPhysio® for your clinical case
- The kit can be sterilized and reused



Reference KIE\_U



**Try in Profile Designer sold per unit**

- Can be sterilized and reused

	Shape		
	A	B	C
Height 1	IE_U.A1	IE_U.B1	IE_U.C1
Height 3	IE_U.A3	IE_U.B3	IE_U.C3

**Profile Designer iPhysio®**

Healing, impression and temporary prosthesis



	Compatible implant system	iPhysio® Profile Designer		Temporary abutment	
		Shape	Height 1		Height 3
AB Dental®	Implant I2, I22, I5, I55, I10 : standard platform Ø 3.75	A	ZSC35_I.A1	ZSC35_I.A3	ZSC_IPPC
		B	ZSC35_I.B1	ZSC35_I.B3	
		C	ZSC35_I.C1	ZSC35_I.C3	

**Esthetibase interfaces**

For the realization of personalized prosthesis (CAD-CAM) in zirconia, PMMA, e.max

Correspondance for the height of the esthetibase			
iPhysio®	Height	1	3
	Shape	A, B and C	A, B and C
Esthetibase height		h 1	h 2

	Compatible implant system	h 1	h 2	Screw
<b>Esthetibase interface for single unit</b>				
AB Dental®	Implant I2, I22, I5, I55, I10 : standard platform Ø 3.75	ZIM_SC.35.PTO	ZIM_SC.35.PTO2	TEK_VP.18.65
<b>Esthetibase interface for multi unit</b>				
AB Dental®	Implant I2, I22, I5, I55, I10 : standard platform Ø 3.75	ZIM_SC.35.PTC	-	TEK_VP.18.65

**Pre-milled**

For the realization of your abutments or abutments in titanium.

	Compatible implant system	Reference	Screw
AB Dental®	Implant I2, I22, I5, I55, I10 : standard platform Ø 3.75	ZIM_SC.35.PP	TEK_VP.18.65



### iPhysio® Try In Profile Designer Kit

- To select the height and shape of the Profile Designer iPhysio® for your clinical case
- The kit can be sterilized and reused



Reference	KIE_U
-----------	-------



### Try in Profile Designer sold per unit

- Can be sterilized and reused

	Shape		
	A	B	C
Height 1	IE_U.A1	IE_U.B1	IE_U.C1
Height 3	IE_U.A3	IE_U.B3	IE_U.C3

### Profile Designer iPhysio®

Healing, impression and temporary prosthesis



	Compatible implant system	iPhysio® Profile Designer		Temporary abutment	
		Shape	Height 1		Height 3
Alpha-Bio Tec®	NeO, SPI, ICE, DFI, ATID : internal hexagonal connection (IH)	A	ZSC35_I.A1	ZSC35_I.A3	ZSC_IPPC
		B	ZSC35_I.B1	ZSC35_I.B3	
		C	ZSC35_I.C1	ZSC35_I.C3	

### Esthetibase interfaces

For the realization of personalized prosthesis (CAD-CAM) in zirconia, PMMA, e.max

Correspondance for the height of the esthetibase			
iPhysio®	Height	h 1 mm	h 3 mm
	Shape	A, B and C	A, B and C
Esthetibase height		<b>h 1</b>	<b>h 2</b>

	Compatible implant system	h 1	h 2	Screw
<b>Esthetibase interface for single unit</b>				
Alpha-Bio Tec®	NeO, SPI, ICE, DFI, ATID : internal hexagonal connection (IH)	ZIM_SC.35.PTO	ZIM_SC.35.PTO2	TEK_VP.18.65
<b>Esthetibase interface for multi unit</b>				
Alpha-Bio Tec®	NeO, SPI, ICE, DFI, ATID : internal hexagonal connection (IH)	ZIM_SC.35.PTC	-	TEK_VP.18.65

### Pre-milled

For the realization of your abutments or abutments in titanium.

	Compatible implant system	Reference	Screw
Alpha-Bio Tec®	NeO, SPI, ICE, DFI, ATID : internal hexagonal connection (IH)	ZIM_SC.35.PP	TEK_VP.18.65

### iPhysio® Try In Profile Designer Kit

- To select the height and shape of the Profile Designer iPhysio® for your clinical case
- The kit can be sterilized and reused



Reference	KIE_U
-----------	-------



#### Try in Profile Designer sold per unit

- Can be sterilized and reused

	Shape		
	A	B	C
Height 1	IE_U.A1	IE_U.B1	IE_U.C1
Height 3	IE_U.A3	IE_U.B3	IE_U.C3

### Profile Designer iPhysio®

Healing, impression and temporary prosthesis



	Compatible implant system	iPhysio® Profile Designer		Temporary abutment	
		Shape	h 1 mm		h 3 mm
Anthogyr®	Axiom® REG and PX	A	AAX_I.A1	AAX_I.A3	AAX_IPPC
		B	AAX_I.B1	AAX_I.B3	
		C	AAX_I.C1	AAX_I.C3	

### Extractors



Recommended for removal of the Profile Designers on Anthogyr® Axiom® implants, owing to the closed conicity of these connections.

	Compatible implant system	Extractor
Anthogyr®	Axiom® REG and PX	CEP_16.175

### Esthetibase interfaces

For the realization of personalized prosthesis (CAD-CAM) in zirconia, PMMA, e.max

Correspondance for the height of the esthetibase			
iPhysio®	Height	1	3
	Shape	A, B and C	A, B and C
Esthetibase height		h 1	h 2

	Compatible implant system	h 1	h 2	Screw
Esthetibase interface for single unit				
Anthogyr®	Axiom® REG and PX	ANT_AX.PTO1	ANT_AX.PTO2	NVP_E35

### Pre-milled

For the realization of your abutments or abutments in titanium.

	Compatible implant system	Reference	Screw
Anthogyr®	Axiom® REG and PX	ANT_PP.AX	ANT_VP.16.65

### iPhysio® Try In Profile Designer Kit

- To select the height and shape of the Profile Designer iPhysio® for your clinical case
- The kit can be sterilized and reused



Reference KIE\_3N



### Try in Profile Designer sold per unit

- Can be sterilized and reused

		Shape			
		A	B	C	D
Height 1		NCI_IE.A1	NCI_IE.B1	NCI_IE.C1	NCI_IE.D1
Height 2		NCI_IE.A2	NCI_IE.B2	NCI_IE.C2	NCI_IE.D2
Height 4		NCI_IE.A4	NCI_IE.B4	NCI_IE.C4	NCI_IE.D4
<b>SHORT</b>					
Height 2		-	NCI_IE.B2S	NCI_IE.C2S	--
Height 3		-	NCI_IE.B3S	NCI_IE.C3S	-
<b>ANGULATED</b>					
Height 2	10°	NCI_IE.A2.10	-	-	-
	20°	NCI_IE.A2.20	-	-	-

### Profile Designer iPhysio®

Healing, impression and temporary prosthesis



	Compatible implant system	iPhysio® Profile Designer				Temporary abutment	
		Shape	Height 1	Height 2	Height 3		Height 4
Astra Tech®	OsseoSpeed™ TX Ø 3.5 and Ø 4 : Ocean or Aqua connection	A	NCI_I.A1	NCI_I.A2	-	NCI_I.A4	NCI_IPPC
		B	NCI_I.B1	NCI_I.B2	-	NCI_I.B4	
		C	NCI_I.C1	NCI_I.C2	-	NCI_I.C4	
		D	NCI_I.D1	NCI_I.D2	-	NCI_I.D4	
<b>SHORT</b>							
Astra Tech®	OsseoSpeed™ TX Ø 3.5 and Ø 4 : Ocean or Aqua connection	B-Short	-	NCI_I.B2S	NCI_I.B3S	-	NCI_IPPC
		C-Short	-	NCI_I.C2S	NCI_I.C3S	-	
<b>ANGULATED</b>							
Astra Tech®	OsseoSpeed™ TX Ø 3.5 and Ø 4 : Ocean or Aqua connexion	A-10°	-	NCI_I.A2.10	-	-	NCI_IPPC
		A-20°	-	NCI_I.A2.20	-	-	

### Esthetibase interfaces

For the realization of personalized prosthesis (CAD-CAM) in zirconia, PMMA, e.max

Correspondance for the height of the esthetibase						
iPhysio®	Height	1	2	3	4	
	Shape	A, B, C and D	A, B, C and D	B and C	B and C	A and D
Esthetibase height		<b>h 1</b>	<b>h 2</b>	<b>h 3</b>	<b>h 3</b>	<b>h 3 or h 4</b>
Compatible implant system		<b>h 1</b>	<b>h 2</b>	<b>h 3</b>	<b>h 4</b>	<b>Screw</b>
Esthetibase interface for single unit						
Astra Tech®	OsseoSpeed™ TX Ø 3.5 and Ø 4 : Ocean or Aqua connection	NPC_PTO40.06	NPC_PTO40.16	NPC_PTO40.26	NPC_PTO40.36	NVP_E35

Compatible implant system		h 1	h 2	h 3	h 4	Screw
<b>Angulated esthetibase interface</b>						
Astra Tech®	OsseoSpeed™ TX Ø 3.5 and Ø 4 : Ocean or Aqua connection	-	NPC_PTOA40.16.10	-	-	NVP_PTOA35
		-	NPC_PTOA40.16.20	-	-	NVP_PTOA35

Compatible implant system		h 1	h 2	h 3	h 4	Screw
<b>Esthetibase interface for multi unit</b>						
Astra Tech®	OsseoSpeed™ TX Ø 3.5 and Ø 4 : Ocean or Aqua connection	NPC_PTC40.06	NPC_PTC40.16	NPC_PTC40.26	NPC_PTC40.36	NVP_E35

## Pre-milled

For the realization of your abutments or abutments in titanium.

Compatible implant system		Reference	Screw
Astra Tech®	OsseoSpeed™ TX Ø 3.5 and Ø 4 : Ocean or Aqua connection	NPS_PER.35	NVP_35

### iPhysio® Try In Profile Designer Kit

- To select the height and shape of the Profile Designer iPhysio® for your clinical case
- The kit can be sterilized and reused



Reference KIE\_U



### Try in Profile Designer sold per unit

- Can be sterilized and reused

	Shape		
	A	B	C
Height 1	IE_U.A1	IE_U.B1	IE_U.C1
Height 3	IE_U.A3	IE_U.B3	IE_U.C3

### Profile Designer iPhysio®

Healing, impression and temporary prosthesis



	Compatible implant system	iPhysio® Profile Designer		Temporary abutment	
		Shape	Height 1		Height 3
BioHorizons®	Internal, Tapered Internal, Tapered Plus : Ø 3.5 yellow platform	A	ZSC35_I.A1	ZSC35_I.A3	ZSC_IPPC
		B	ZSC35_I.B1	ZSC35_I.B3	
		C	ZSC35_I.C1	ZSC35_I.C3	
BioHorizons®	Internal, Tapered Internal, Tapered Plus : Ø 4.5 green platform	B	ZSC45_I.B1	ZSC45_I.B3	ZSC_IPPC
		C	ZSC45_I.C1	ZSC45_I.C3	

### Esthetibase interfaces

For the realization of personalized prosthesis (CAD-CAM) in zirconia, PMMA, e.max

Correspondance for the height of the esthetibase			
iPhysio®	Height	1	3
	Shape	A, B and C	A, B and C
Esthetibase height		h 1	h 2

Compatible implant system		h 1	h 2	Screw
<b>Esthetibase interface for single unit</b>				
BioHorizons®	Internal, Tapered Internal, Tapered Plus : Ø 3.5 yellow platform	ZIM_SC.35.PTO	ZIM_SC.35.PTO2	TEK_VP.18.65
	Internal, Tapered Internal, Tapered Plus : Ø 4.5 green platform	ZIM_SC.45.PTO	ZIM_SC.45.PTO2	TEK_VP.18.65

Compatible implant system		h 1	h 2	Screw
<b>Esthetibase interface for multi unit</b>				
BioHorizons®	Internal, Tapered Internal, Tapered Plus : Ø 3.5 yellow platform	ZIM_SC.35.PTC	-	TEK_VP.18.65
	Internal, Tapered Internal, Tapered Plus : Ø 4.5 green platform	ZIM_SC.45.PTC	-	TEK_VP.18.65

### Pre-milled

For the realization of your abutments or abutments in titanium.

Compatible implant system		Reference	Screw
BioHorizons®	Internal, Tapered Internal, Tapered Plus : Ø 3.5 yellow platform	ZIM_SC.35.PP	TEK_VP.18.65
	Internal, Tapered Internal, Tapered Plus : Ø 4.5 green platform	ZIM_SC.45.PP	TEK_VP.18.65

### iPhysio® Try In Profile Designer Kit

- To select the height and shape of the Profile Designer iPhysio® for your clinical case
- The kit can be sterilized and reused



Reference	KIE_U
-----------	-------



#### Try in Profile Designer sold per unit

- Can be sterilized and reused

	Shape		
	A	B	C
Height 1	IE_U.A1	IE_U.B1	IE_U.C1
Height 3	IE_U.A3	IE_U.B3	IE_U.C3

### Profile Designer iPhysio®

Healing, impression and temporary prosthesis



	Compatible implant system	Profile Designer iPhysio®			Temporary abutment
		Shape	Height 1	Height 3	
Biotech Dental®	Kontakt®, Kontakt S® Ø 3.6 - Ø 4.2 - Ø 4.8 and Ø 5.4	A	BKO_I.A1	BKO_I.A3	BKO_IPPC
		B	BKO_I.B1	BKO_I.B3	
		C	BKO_I.C1	BKO_I.C3	

### Extractors



Recommended for removal of the Profile Designers on Kontakt®, Kontakt S® implants, owing to the closed conicity of these connections.

	Compatible implant system	Extractor
Biotech Dental®	Kontakt®	CEP_14.175

### Esthetibase interfaces

For the realization of personalized prosthesis (CAD-CAM) in zirconia, PMMA, e.max

Correspondance for the height of the esthetibase			
iPhysio®	Height	1	3
	Shape	A, B and C	A, B and C
Esthetibase height		h 1	h 2

	Compatible implant system	h 1	h 2	Screw
Esthetibase interface for single unit				
Biotech Dental®	Kontakt®, Kontakt S® Ø 3.6 - Ø 4.2 - Ø 4.8 and Ø 5.4	BTH_KO.X.PTO	BTH_KO.X.PTO2	NVP_31

### Pre-milled

For the realization of your abutments or abutments in titanium.

	Compatible implant system	Reference	Screw
Biotech Dental®	Kontakt®, Kontakt S® Ø 3.6 - Ø 4.2 - Ø 4.8 and Ø 5.4	BTH_KO.X.PP	NVP_31

## iPhysio® Try In Profile Designer Kit

- To select the height and shape of the Profile Designer iPhysio® for your clinical case
- The kit can be sterilized and reused



Reference KIE\_3N



## Try in Profile Designer sold per unit

- Can be sterilized and reused

		Shape			
		A	B	C	D
Height 1		NCI_IE.A1	NCI_IE.B1	NCI_IE.C1	NCI_IE.D1
Height 2		NCI_IE.A2	NCI_IE.B2	NCI_IE.C2	NCI_IE.D2
Height 4		NCI_IE.A4	NCI_IE.B4	NCI_IE.C4	NCI_IE.D4
<b>SHORT</b>					
Height 2		-	NCI_IE.B2S	NCI_IE.C2S	--
Height 3		-	NCI_IE.B3S	NCI_IE.C3S	-
<b>ANGULATED</b>					
Height 2	10°	NCI_IE.A2.10	-	-	-
	20°	NCI_IE.A2.20	-	-	-

## Profile Designer iPhysio®

Healing, impression and temporary prosthesis



	Compatible implant system	iPhysio® Profile Designer				Temporary abutment	
		Shape	Height 1	Height 2	Height 3		Height 4
Easy Implant® Master-C, Master-S : Ocean connection		A	NCI_I.A1	NCI_I.A2	-	NCI_I.A4	NCI_IPPC
		B	NCI_I.B1	NCI_I.B2	-	NCI_I.B4	
		C	NCI_I.C1	NCI_I.C2	-	NCI_I.C4	
		D	NCI_I.D1	NCI_I.D2	-	NCI_I.D4	
<b>SHORT</b>							
Easy Implant® Master-C, Master-S : Ocean connection		B-Short	-	NCI_I.B2S	NCI_I.B3S	-	NCI_IPPC
		C-Short	-	NCI_I.C2S	NCI_I.C3S	-	
<b>ANGULATED</b>							
Easy Implant® Master-C, Master-S : Ocean connection		A-10°	-	NCI_I.A2.10	-	-	NCI_IPPC
		A-20°	-	NCI_I.A2.20	-	-	

## Esthetibase interfaces

For the realization of personalized prosthesis (CAD-CAM) in zirconia, PMMA, e.max

Correspondance for the height of the esthetibase						
iPhysio®	Height	1	2	3	4	
	Shape	A, B, C and D	A, B, C and D	B and C	B and C	A and D
Esthetibase height		<b>h 1</b>	<b>h 2</b>	<b>h 3</b>	<b>h 3</b>	<b>h 3 or h 4</b>
Compatible implant system		<b>h 1</b>	<b>h 2</b>	<b>h 3</b>	<b>h 4</b>	<b>Screw</b>
Esthetibase interface for single unit						
Easy Implant®	Master-C, Master-S : Ocean connection	NPC_PTO40.06	NPC_PTO40.16	NPC_PTO40.26	NPC_PTO40.36	NVP_E35

Compatible implant system		h 1	h 2	h 3	h 4	Screw
<b>Angulated esthetibase interface</b>						
Easy Implant®	Master-C, Master-S : Ocean connection	-	NPC_PTOA40.16.10	-	-	NVP_PTOA35
		-	NPC_PTOA40.16.20	-	-	NVP_PTOA35

Compatible implant system		h 1	h 2	h 3	h 4	Screw
<b>Esthetibase interface for multi unit</b>						
Easy Implant®	Master-C, Master-S : Ocean connection	NPC_PTC40.06	NPC_PTC40.16	NPC_PTC40.26	NPC_PTC40.36	NVP_E35

## Pre-milled

For the realization of your abutments or abutments in titanium.

Compatible implant system		Reference	Screw
Easy Implant®	Master-C, Master-S : Ocean connection	NPS_PER.35	NVP_35



### iPhysio® Try In Profile Designer Kit

- To select the height and shape of the Profile Designer iPhysio® for your clinical case
- The kit can be sterilized and reused



Reference	KIE_U
-----------	-------



### Try in Profile Designer sold per unit

- Can be sterilized and reused

	Shape		
	A	B	C
Height 1	IE_U.A1	IE_U.B1	IE_U.C1
Height 3	IE_U.A3	IE_U.B3	IE_U.C3

### Profile Designer iPhysio®

Healing, impression and temporary prosthesis



	Compatible implant system	iPhysio® Profile Designer			Temporary abutment
		Shape	Height 1	Height 3	
Global D®	In-Kone® Universal and Primo: plateform ST	A	GIK_I.A1	GIK_I.A3	GIK_IPPC
		B	GIK_I.B1	GIK_I.B3	
		C	GIK_I.C1	GIK_I.C3	

### Extractors



Recommended for removal of the Profile Designers on Global D® In-Kone® implants, owing to the closed conicity of these connections.

	Compatible implant system	Extractor
Global D®	In-Kone®	CEP_18.175

### Esthetibase interfaces

For the realization of personalized prosthesis (CAD-CAM) in zirconia, PMMA, e.max

Correspondance for the height of the esthetibase			
iPhysio®	Height	1	3
	Shape	A, B and C	A, B and C
Esthetibase height		h 1	h 2

	Compatible implant system	h 1	h 3	Screw
Esthetibase interface for single unit				
Global D®	In-Kone® Universal and Primo: plateform ST	TEK_PTO.INK	TEK_PTO.INK2	TEK_VP.18.65

### Pre-milled

For the realization of your abutments or abutments in titanium.

	Compatible implant system	Reference	Screw
Global D®	In-Kone® Universal and Primo: plateform ST	TEK_PP.IN	TEK_VP.18.65

### iPhysio® Try In Profile Designer Kit

- To select the height and shape of the Profile Designer iPhysio® for your clinical case
- The kit can be sterilized and reused



Reference KIE\_U



**Try in Profile Designer sold per unit**  
 • Can be sterilized and reused

	Shape		
	A	B	C
Height 1	IE_U.A1	IE_U.B1	IE_U.C1
Height 3	IE_U.A3	IE_U.B3	IE_U.C3

### Profile Designer iPhysio®

Healing, impression and temporary prosthesis



	Compatible implant system	iPhysio® Profile Designer			Temporary abutment
		Shape	Height 1	Height 3	
Implant Direct™	Legacy® : Ø 3.5 green platform	A	ZSC35_I.A1	ZSC35_I.A3	ZSC_IPPC
		B	ZSC35_I.B1	ZSC35_I.B3	
		C	ZSC35_I.C1	ZSC35_I.C3	
	Legacy® : Ø 4.5 purple platform	B	ZSC45_I.B1	ZSC45_I.B3	ZSC_IPPC
		C	ZSC45_I.C1	ZSC45_I.C3	
	InterActive™ Ø 3.2 and Ø 3.7 : Ø 3 purple platform	A	NCCN_I.A1	NCCN_I.A3	NCCN_IPPC
B		NCCN_I.B1	NCCN_I.B3		
InterActive™ Ø 4.7 and Ø 5 : Ø 3.4 yellow platform	B	NCCR_I.B1	NCCR_I.B3	-	
	C	NCCR_I.C1	NCCR_I.C3		

### Esthetibase interfaces

For the realization of personalized prosthesis (CAD-CAM) in zirconia, PMMA, e.max

Correspondance for the height of the esthetibase			
iPhysio®	Height	1	3
	Shape	A, B and C	A, B and C
Esthetibase height		h 1	h 2

	Compatible implant system	h 1	h 2	Screw
<b>Esthetibase interface for single unit</b>				
Implant Direct™	Legacy® : Ø 3.5 green platform	ZIM_SC.35.PTO	ZIM_SC.35.PTO2	TEK_VP.18.65
	Legacy® : Ø 4.5 purple platform	ZIM_SC.45.PTO	ZIM_SC.45.PTO2	TEK_VP.18.65
	InterActive™ Ø 3.2 and Ø 3.7 : Ø 3 purple platform	NOB_AC.N.PTO	NOB_AC.N.PTO2	NVP_E35
	InterActive™ Ø 4.7 and Ø 5 : Ø 3.4 yellow platform	NOB_AC.R.PTO	NOB_AC.R.PTO2	NVP_20.85
<b>Esthetibase interface for multi unit</b>				
Implant Direct™	Legacy® : Ø 3.5 green platform	ZIM_SC.35.PTC	-	TEK_VP.18.65
	Legacy® : Ø 4.5 purple platform	ZIM_SC.45.PTC	-	TEK_VP.18.65
	InterActive™ Ø 3.2 and Ø 3.7 : Ø 3 purple platform	NOB_AC.N.PTC	-	NVP_E35
	InterActive™ Ø 4.7 and Ø 5 : Ø 3.4 yellow platform	NOB_AC.R.PTC	-	NVP_20.85

### Pre-milled

For the realization of your abutments or abutments in titanium.

	Compatible implant system	Reference	Screw
Implant Direct™	Legacy® : Ø 3.5 green platform	ZIM_SC.35.PP	TEK_VP.18.65
	Legacy® : Ø 4.5 purple platform	ZIM_SC.45.PP	TEK_VP.18.65
	InterActive™ Ø 3.2 and Ø 3.7 : Ø 3 purple platform	NOB_AC.N.PP	NVP_35
	InterActive™ Ø 4.7 and Ø 5 : Ø 3.4 yellow platform	NOB_AC.R.PP	NVP_20.85

### iPhysio® Try In Profile Designer Kit

- To select the height and shape of the Profile Designer iPhysio® for your clinical case
- The kit can be sterilized and reused



Reference KIE\_U



### Try in Profile Designer sold per unit

- Can be sterilized and reused

	Shape		
	A	B	C
Height 1	IE_U.A1	IE_U.B1	IE_U.C1
Height 3	IE_U.A3	IE_U.B3	IE_U.C3

### Profile Designer iPhysio®

Healing, impression and temporary prosthesis



	Compatible implant system	iPhysio® Profile Designer		Temporary abutment	
		Shape	Height 1		Height 3
Mis®	SEVEN® and M4® Ø 3.75 - Ø 4.2 : hexagonal internal - purple standard platform (SP)	A	ZSC35_I.A1	ZSC35_I.A3	ZSC_IPPC
		B	ZSC35_I.B1	ZSC35_I.B3	
		C	ZSC35_I.C1	ZSC35_I.C3	
	SEVEN® and M4® Ø 5 - Ø 6 : hexagonal internal - green wide platform (WP)	B	ZSC45_I.B1	ZSC45_I.B3	ZSC_IPPC
		C	ZSC45_I.C1	ZSC45_I.C3	

### Esthetibase interfaces

For the realization of personalized prosthesis (CAD-CAM) in zirconia, PMMA, e.max

Correspondance for the height of the esthetibase			
iPhysio®	Height	1	3
	Shape	A, B and C	A, B and C
Esthetibase height		h 1	h 2

	Compatible implant system	h 1	h 2	Screw
<b>Esthetibase interface for single unit</b>				
Mis®	SEVEN® and M4® Ø 3.75 - Ø 4.2 : hexagonal internal - purple standard platform (SP)	ZIM_SC.35.PTO	ZIM_SC.35.PTO2	TEK_VP.18.65
	SEVEN® and M4® Ø 5 - Ø 6 : hexagonal internal - green wide platform (WP)	ZIM_SC.45.PTO	ZIM_SC.45.PTO2	TEK_VP.18.65
<b>Esthetibase interface for multi unit</b>				
Mis®	SEVEN® and M4® Ø 3.75 - Ø 4.2 : hexagonal internal - purple standard platform (SP)	ZIM_SC.35.PTC	-	TEK_VP.18.65
	SEVEN® and M4® Ø 5 - Ø 6 : hexagonal internal - green wide platform (WP)	ZIM_SC.45.PTC	-	TEK_VP.18.65

### Pre-milled

For the realization of your abutments or abutments in titanium.

	Compatible implant system	Reference	Screw
Mis®	SEVEN® and M4® Ø 3.75 - Ø 4.2 : hexagonal internal - purple standard platform (SP)	ZIM_SC.35.PP	TEK_VP.18.65
	SEVEN® and M4® Ø 5 - Ø 6 : hexagonal internal - green wide platform (WP)	ZIM_SC.45.PP	TEK_VP.18.65

### iPhysio® Try In Profile Designer Kit

- To select the height and shape of the Profile Designer iPhysio® for your clinical case
- The kit can be sterilized and reused



Reference	KIE_U
-----------	-------



#### Try in Profile Designer sold per unit

- Can be sterilized and reused

	Shape		
	A	B	C
Height 1	IE_U.A1	IE_U.B1	IE_U.C1
Height 3	IE_U.A3	IE_U.B3	IE_U.C3

### Profile Designer iPhysio®

Healing, impression and temporary prosthesis



	Compatible implant system	iPhysio® Profile Designer		Temporary abutment	
		Shape	Height 1		Height 3
Nobel Biocare®	NobelActive®, NobelReplace® CC and NobelParallel™ CC : NP	A	NCCN_I.A1	NCCN_I.A3	NCCN_IPPC
		B	NCCN_I.B1	NCCN_I.B3	
Nobel Biocare®	NobelActive®, NobelReplace® CC and NobelParallel™ CC : RP	B	NCCR_I.B1	NCCR_I.B3	-
		C	NCCR_I.C1	NCCR_I.C3	

### Esthetibase interfaces

For the realization of personalized prosthesis (CAD-CAM) in zirconia, PMMA, e.max

Correspondance for the height of the esthetibase			
iPhysio®	Height	1	3
	Shape	A, B and C	A, B and C
Esthetibase height		h 1	h 2

	Compatible implant system	h 1	h 2	Screw
		<b>Esthetibase interface for single unit</b>		
Nobel Biocare®	NobelActive®, NobelReplace® CC and NobelParallel™ CC : NP	NOB_AC.N.PTO	NOB_AC.N.PTO2	NVP_E35
	NobelActive®, NobelReplace® CC and NobelParallel™ CC : RP	NOB_AC.R.PTO	NOB_AC.R.PTO2	NVP_20.85

	Compatible implant system	h 1	h 2	Screw
		<b>Esthetibase interface for multi unit</b>		
Nobel Biocare®	NobelActive®, NobelReplace® CC and NobelParallel™ CC : NP	NOB_AC.N.PTC	-	NVP_E35
	NobelActive®, NobelReplace® CC and NobelParallel™ CC : RP	NOB_AC.R.PTC	-	NVP_20.85

### Pre-milled

For the realization of your abutments or abutments in titanium.

	Compatible implant system	Reference	Screw
		<b>Pre-milled</b>	
Nobel Biocare®	NobelActive®, NobelReplace® CC and NobelParallel™ CC : NP	NOB_AC.N.PP	NVP_35
	NobelActive®, NobelReplace® CC and NobelParallel™ CC : RP	NOB_AC.R.PP	NVP_20.85

### iPhysio® Try In Profile Designer Kit

- To select the height and shape of the Profile Designer iPhysio® for your clinical case
- The kit can be sterilized and reused



Reference KIE\_U



### Try in Profile Designer sold per unit

- Can be sterilized and reused

	Shape		
	A	B	C
Height 1	IE_U.A1	IE_U.B1	IE_U.C1
Height 3	IE_U.A3	IE_U.B3	IE_U.C3

### Profile Designer iPhysio®

Healing, impression and temporary prosthesis



	Compatible implant system	iPhysio® Profile Designer			Temporary abutment
		Shape	Height 1	Height 3	
Straumann®	Bone Level (BL) and Bone Level Tapered (BLT) Ø 3.3 : CrossFit NC connection	A	SBLN_I.A1	SBLN_I.A3	SBL_IPPC
		B	SBLN_I.B1	SBLN_I.B3	
	Bone Level (BL) and Bone Level Tapered (BLT) Ø 4.1 and Ø 4.8 : CrossFit® RC connection	B	SBLR_I.B1	SBLR_I.B3	SBL_IPPC
		C	SBLR_I.C1	SBLR_I.C3	
	Soft Tissue Level® : Standard (S), Standard Plus (SP), Tapered Effect (TE) : synOcta® RN connection	D	ACI_IR (unique height)		-
	Soft Tissue Level® : Standard (S), Standard Plus (SP), Tapered Effect (TE) : synOcta® WN connection	C	ACI_IW (unique height)		-

### Esthetibase interfaces

For the realization of personalized prosthesis (CAD-CAM) in zirconia, PMMA, e.max

Correspondance for the height of the esthetibase			
iPhysio®	Height	1	3
	Shape	A, B and C	A, B and C
Esthetibase height		h 1	h 2

	Compatible implant system	h 1	h 2	Screw
		Esthetibase interface for single unit		
Straumann®	Bone Level (BL) and Bone Level Tapered (BLT) Ø 3.3 : CrossFit NC connection	STR_BL.N.PTO	STR_BL.N.PTO2	CPV_VC16.100
	Bone Level (BL) and Bone Level Tapered (BLT) Ø 4.1 et Ø 4.8 : CrossFit® RC connection	STR_BL.R.PTO	STR_BL.R.PTO2	CPV_VC16.100
	Soft Tissue Level® : Standard (S), Standard Plus (SP), Tapered Effect (TE) : synOcta® RN connection	APCC_PTO.48	-	APS_VF20.93
	Soft Tissue Level® : Standard (S), Standard Plus (SP), Tapered Effect (TE) : synOcta® WN connection	APCC_PTO.65	-	APS_VF20.93

	Compatible implant system	h 1	Screw
<b>Esthetibase interface for multi unit</b>			
Straumann®	Bone Level (BL) and Bone Level Tapered (BLT) Ø 3.3 : CrossFit® NC connection	STR_BL.N.PTC	CPV_VC16.100
	Bone Level (BL) and Bone Level Tapered (BLT) Ø 4.1 and Ø 4.8 : CrossFit® RC connection	STR_BL.R.PTC	CPV_VC16.100
	Soft Tissue Level® : Standard (S), Standard Plus (SP), Tapered Effect (TE) : synOcta® RN connection	APCC_PTC.48	APS_VF20.93
	Soft Tissue Level® : Standard (S), Standard Plus (SP), Tapered Effect (TE) : SynOcta® WN connection	APCC_PTC.65	APS_VF20.93

## Pre-milled

For the realization of your abutments or abutments in titanium.

	Compatible implant system	Reference	Screw
Straumann®	Bone Level (BL) and Bone Level Tapered (BLT) Ø 3.3 : CrossFit NC connection	STR_BL.N.PP	CPV_VC16.100
	Bone Level (BL) and Bone Level Tapered (BLT) Ø 4.1 and Ø 4.8 : CrossFit® RC connection	STR_BL.R.PP	CPV_VC16.100
	Soft Tissue Level® : Standard (S), Standard Plus (SP), Tapered Effect (TE) : synOcta® RN connection	APS_PER.48	APS_VF20.93
	Soft Tissue Level® : Standard (S), Standard Plus (SP), Tapered Effect (TE) : synOcta® WN connection	APS_PER.65	APS_VF20.93

### iPhysio® Try In Profile Designer Kit

- To select the height and shape of the Profile Designer iPhysio® for your clinical case
- The kit can be sterilized and reused



Reference KIE\_U



### Try in Profile Designer sold per unit

- Can be sterilized and reused

	Shape		
	A	B	C
Height 1	IE_U.A1	IE_U.B1	IE_U.C1
Height 3	IE_U.A3	IE_U.B3	IE_U.C3

### Profile Designer iPhysio®

Healing, impression and temporary prosthesis



	Compatible implant system	iPhysio® Profile Designer		Temporary abutment	
		Shape	Height 1		Height 3
Zimmer Biomet®	Tapered Screw-Vent®, Trabecular Metal™, TSX™ : Ø 3.5 green platform	A	ZSC35_I.A1	ZSC35_I.A3	ZSC_IPPC
		B	ZSC35_I.B1	ZSC35_I.B3	
		C	ZSC35_I.C1	ZSC35_I.C3	
Zimmer Biomet®	Tapered Screw-Vent®, Trabecular Metal™, TSX™ : Ø 4.5 purple platform	B	ZSC45_I.B1	ZSC45_I.B3	ZSC_IPPC
		C	ZSC45_I.C1	ZSC45_I.C3	

### Esthetibase interfaces

For the realization of personalized prosthesis (CAD-CAM) in zirconia, PMMA, e.max

Correspondance for the height of the esthetibase			
iPhysio®	Height	1	3
	Shape	A, B and C	A, B and C
Esthetibase height		h 1	h 2

Compatible implant system		h 1	h 2	Screw
<b>Esthetibase interface for single unit</b>				
Zimmer Biomet®	Tapered Screw-Vent®, Trabecular Metal™, TSX™ : Ø 3.5 green platform	ZIM_SC.35.PTO	ZIM_SC.35.PTO2	TEK_VP.18.65
Zimmer Biomet®	Tapered Screw-Vent®, Trabecular Metal™, TSX™ : Ø 4.5 purple platform	ZIM_SC.45.PTO	ZIM_SC.45.PTO2	TEK_VP.18.65

Compatible implant system		h 1	h 2	Screw
<b>Esthetibase interface for multi unit</b>				
Zimmer Biomet®	Tapered Screw-Vent®, Trabecular Metal™, TSX™ : Ø 3.5 green platform	ZIM_SC.35.PTC	-	TEK_VP.18.65
Zimmer Biomet®	Tapered Screw-Vent®, Trabecular Metal™, TSX™ : Ø 4.5 purple platform	ZIM_SC.45.PTC	-	TEK_VP.18.65

### Pre-milled

For the realization of your abutments or abutments in titanium.

Compatible implant system		Reference	Screw
Zimmer Biomet®	Tapered Screw-Vent®, Trabecular Metal™, TSX™ : Ø 3.5 green platform	ZIM_SC.35.PP	TEK_VP.18.65
Zimmer Biomet®	Tapered Screw-Vent®, Trabecular Metal™, TSX™ : Ø 4.5 purple platform	ZIM_SC.45.PP	TEK_VP.18.65



[www.iphysio.dental](http://www.iphysio.dental) | [sales@lyraetk.com](mailto:sales@lyraetk.com) | Tél. +33 (0)1 76 36 14 04

 EUROTEKNIKA S.A.S - 726 rue du Général de Gaulle, 74700 Sallanches (France)

Class I, IIa and IIb medical devices in compliance with European Regulation MDR (EU) 2017/745 (class I) and European Directive 93/42/EEC (classes IIa and IIb) and CE marking (class I) and CE 0459 (class IIa and IIb). Devices not reimbursed by National Insurance, they must be used by oral health professionals. Please read the instructions and user manual carefully.

 EUROTEKNIKA S.A.S - 726 rue du Général de Gaulle, 74700 Sallanches (France)

That procedure pack is a combination of medical devices. Class I, IIa and IIb medical devices in compliance with European Regulation MDR (EU) 2017/745 (class I) and European Directive 93/42/EEC (classes IIa and IIb) and CE marking (class I) and CE 0459 (class IIa and IIb). Devices not reimbursed by National Insurance, they must be used by oral health professionals. Please read the instructions and user manual carefully.

**LYRAETK**  
DIGITAL DENTAL PROTOCOLS  
Simple . Safe . Accessible

Ref\_iphysio\_GB\_i12\_2024\_02