



iphysio[®]

THE CODE

EVERYTHING YOU NEED TO KNOW
TO SIMPLIFY YOUR IMPLANT TREATMENT



« SIMPLICITY IS
THE ULTIMATE SOPHISTICATION »

Léonard de Vinci

The iPhysio® Profile Designer is the next generation of healing abutment designed and created by etk in 2014. The IPhysio profile designer is the single piece that simplifies all the implant protocol. **This 3 in 1 solution** can be used without removal for **healing, impression and temporization.**



This booklet has been realized with Dr. Legros, Dr Cheylus, Dr Koclejda, and dentists who are members of the Actis Iphysio user club, to share their experiences and tips through clinical cases.



- 1/ SHAPE AN ANATOMICAL PROSTHETIC CRADLE.....P.4
- 2/ PRESERVE THE GINGIVAL PAPILLAEP.6
- 3/ SUCCESSFUL IMPRESSION.....P.8
- 4/ PRESERVE THE RESIN FOR YOUR TEMPORARY P.10
- 5/ PROSTHESIS AVOID MANIPULATION OF THE SUPRA-IMPLANT PARTS DURING ADJUSTMENT... P.12
- 6/ SECURING THE PROSTHETIC ADAPTATION AND THE OCCLUSION..... P.14
- 7/ USE THE SCREW TO REMOVE THE IPHYSIO® P.16
- 8/ MAINTAIN THE GINGIVAL CRADLE IN THE FINAL RESTORATION P.18
- 9/ MAINTAIN THE PROPERTIES OF THE ZIRCONIA COATING P.20
- 10/ MAKE A HD PHOTO TO TRANSMIT THE RIGHT INFORMATIONP.22
- 11/ COMMUNICATE WELL WITH YOUR LABORATORY..... P.24
- VIRTUOUS DEVICE..... P.26

1 / SHAPE AN ANATOMICAL PROSTHETIC CRADLE

YES



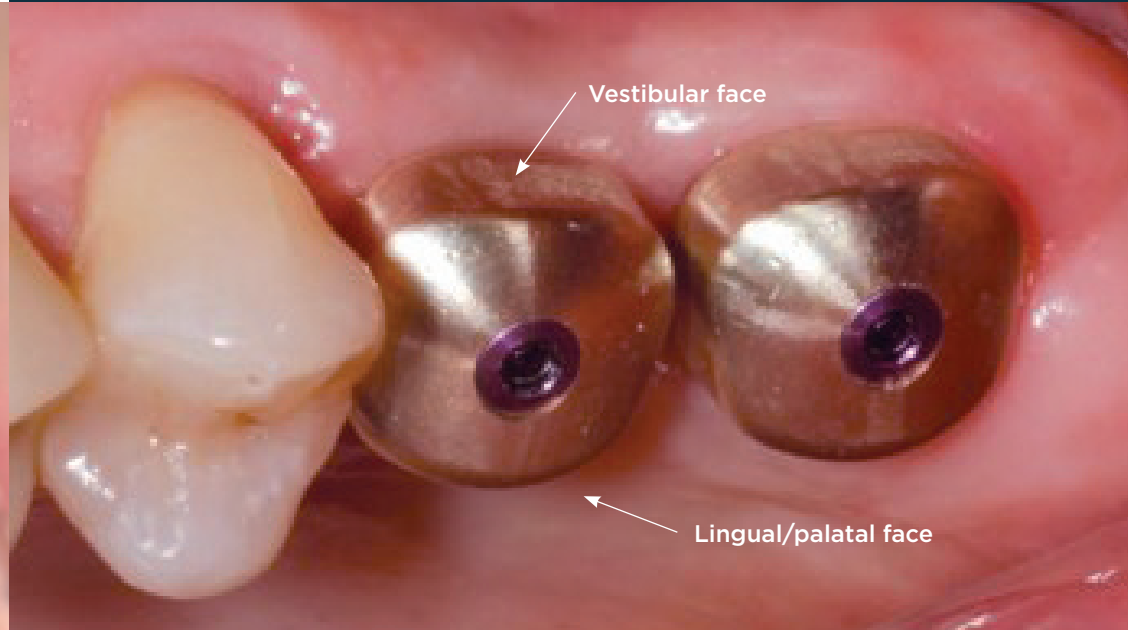
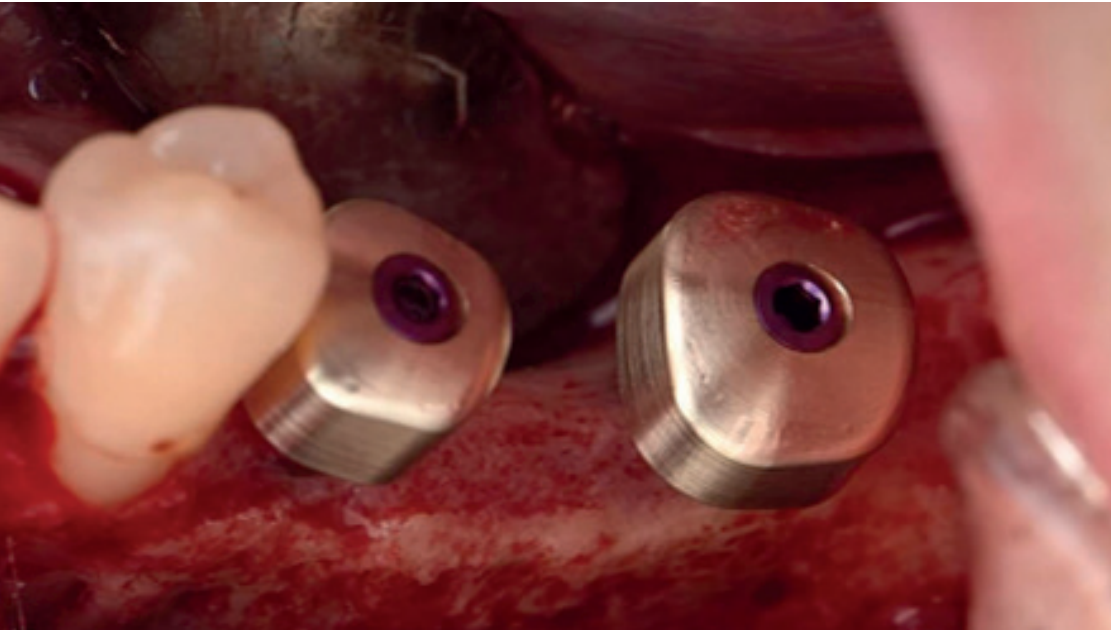
NO

The vertical positioning of the iPhysio® Profile Designer determines the prosthetic cradle

For an optimal aesthetic result, the iPhysio® Profile Designer should be slightly buried to provide enough space for “subcritical contour” of the gingival area.

2/ PRESERVE THE GINGIVAL PAPILLAE

YES



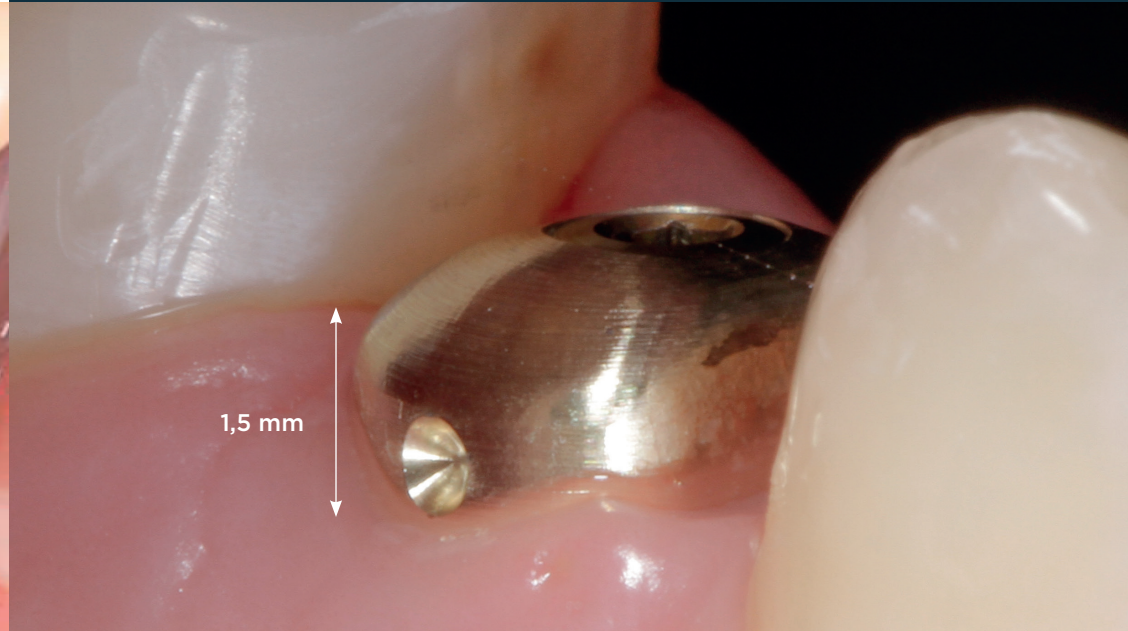
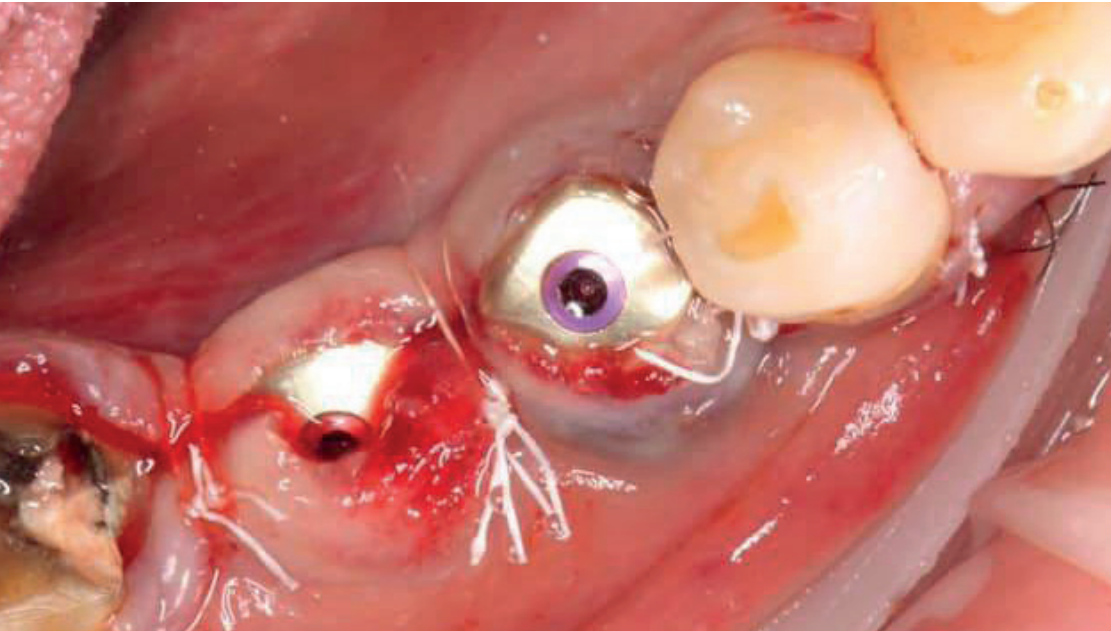
NO

Preserve the gum papillae through the correct orientation of the iPhysis®

The iPhysis® has two different sides, one vestibular, the other lingual/palatal. Positioning correctly the iPhysis® is ideally suited to the natural anatomy of the teeth.

3/ SUCCESSFUL IMPRESSION

YES



NO

Place at least 1.5 mm above the soft tissues

To ensure the perfect recognition of the iPhysio® by the intra oral scanner, it must not be covered by the tissue during the impression process.

4 / SERVE THE RESIN FOR YOUR TEMPORARY PROSTHESIS

YES



NO

The temporary abutment allows you to easily remove the provisional prosthesis when it is once

To preserve the resin of your temporary prosthesis when you are removing it for adjustments, keep the temporary abutment in its entirety.

5/ PROSTHESIS AVOID MANIPULATION OF THE SUPRA-IMPLANT PARTS DURING ADJUSTMENT

YES



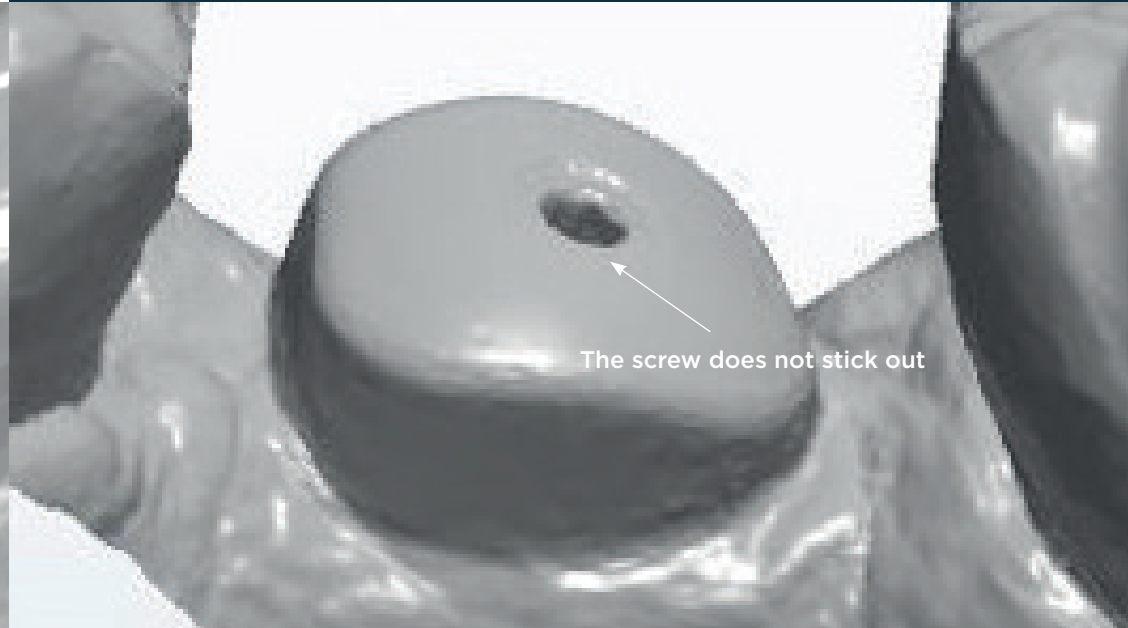
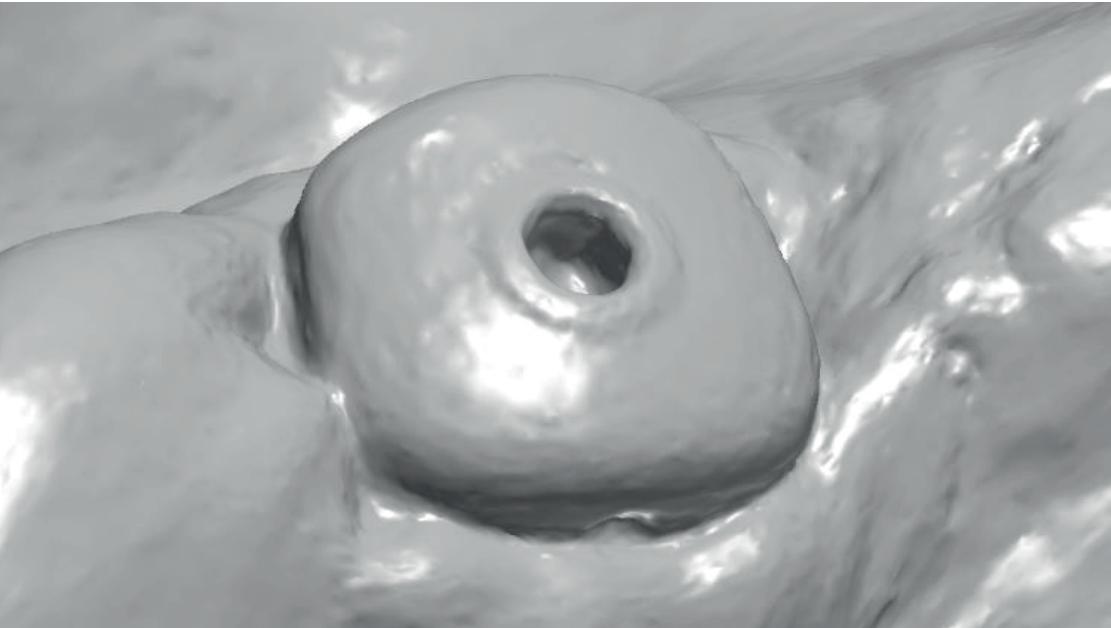
NO

A used and sterilized iPhysis designer profile is ideal for finalizing the prosthesis

Once the provisional prosthesis has been formed, it can be finalised outside the patient's mouth on another iPhysis® Profile Designer that you have sterilised beforehand. This has 2 advantages: you preserve the soft tissue and you do not wear out the abutment clip unnecessarily.

6 / SECURING THE PROSTHETIC ADAPTATION AND THE OCCLUSION

YES



NO

A smooth surface is the guarantee of a properly engaged iPhysio®

To ensure a perfect match between the prosthetic cradle of the iPhysio® and the final restoration, it is strongly recommended to systematically tighten the screw before taking an impression and to check the insertion with a retroalveolar X-ray.

7/ USE THE SCREW TO REMOVE
THE IPHYSIO®

YES



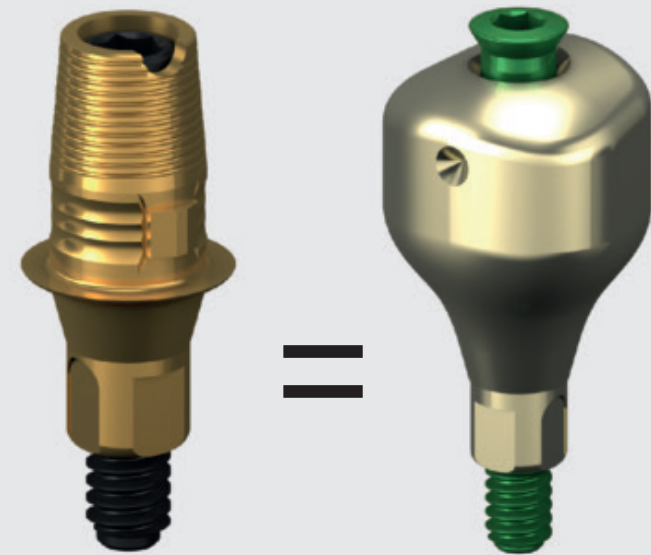
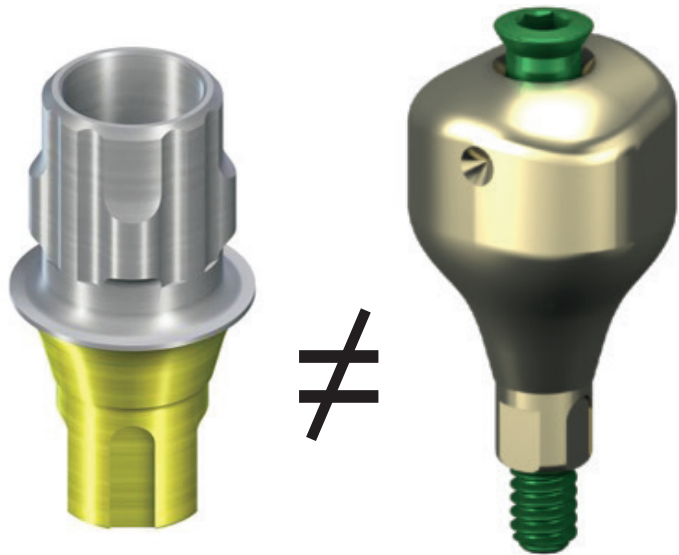
NO

The screw is a good gripper

The iPhysis® has a captive screw. Pull out this screw slightly and use it as a gripper to make it easier to remove the iPhysis®. Thus, you preserve the marginal tissues.

8 / MAINTAIN THE GINGIVAL CRADLE IN THE FINAL RESTORATION

YES



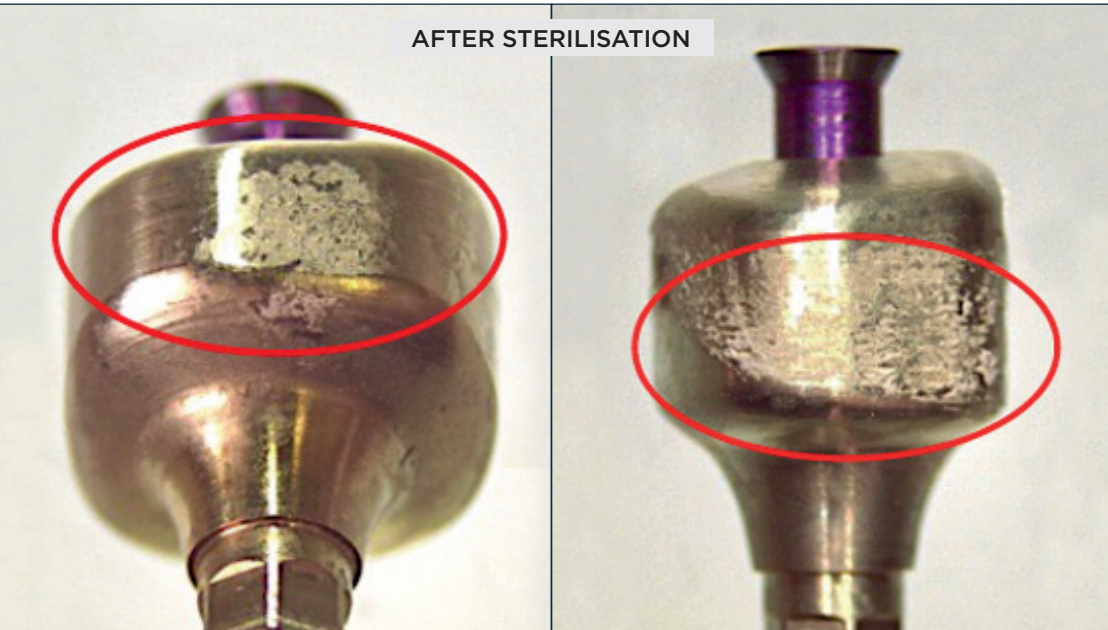
NO

Esthetibase titanium interfaces have the same emergence profile as the iPhysio[®]

In order to preserve the soft tissue and avoid tissue compression, the emergence profile created during the healing of the soft tissue is retained in the final restoration.

9/ MAINTAIN THE PROPERTIES OF THE ZIRCONIA COATING

YES



NO

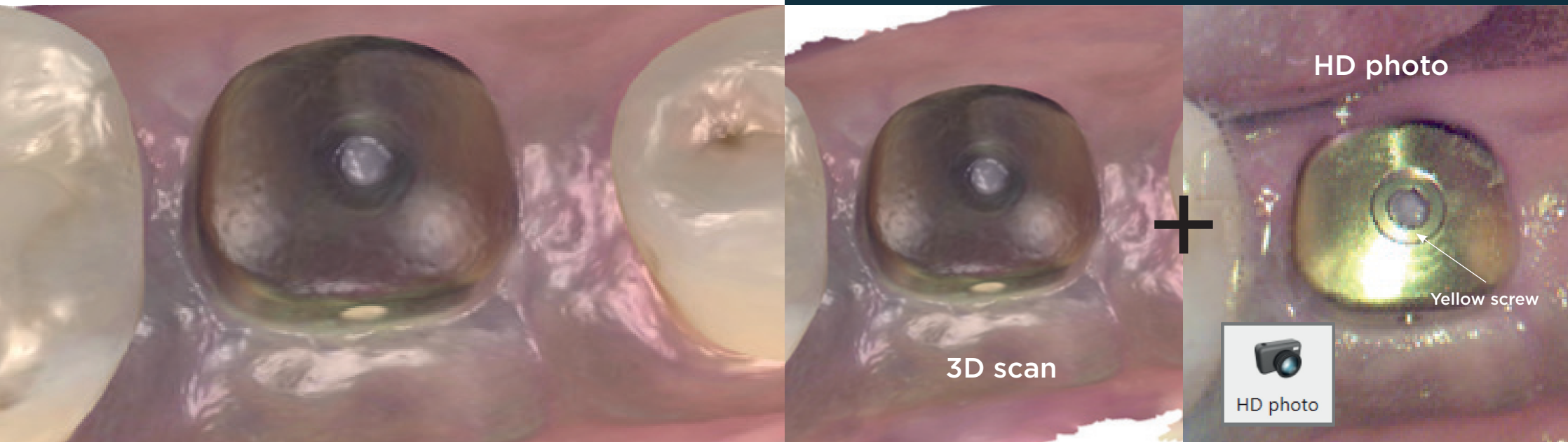
The zirconia coating is valuable

Single use allows the full benefit of the iphysio zirconia coating, which is optimal for the soft tissue interface.

Studies show that the surface, despite its zirconia coating, deteriorates during the cleaning and sterilisation protocol.

10/ MAKE A HD PHOTO TO TRANSMIT THE RIGHT INFORMATION

YES



NO

**HD photo, an indispensable
complement to your scan**

The transmission of the correct dimensional information from iPhysio® is essential. An HD photo makes it possible to confirm the colour of the screw and thus avoid any problem of malocclusion in the final prosthesis. In this case, the screw is yellow.

11 / COMMUNICATE WELL WITH YOUR LABORATORY

YES

Restorations			
Types	FDI	Type	Design settings
	36	Screw Retained Crown	AbutmentScrewRetainedCrown
Material	Emax		
Shade	A3		
Manufacturer	Euroteknika		
Connection	NP		
System	Naturall+		

Technical information:			
Order form settings file(s) IDs:	8e530ffe-2884-4a4c-b3df-a5aa00f0c33d_Lyra_Implanto_Lyra_Implanto_V33		
Order form settings file(s):			
Clinic ID:	02851		
Scan files	Scan type	File name	Date
	LowerJawScan	LowerJawScan.DCM	11/03/2021 18:39:53
	UpperJawScan	UpperJawScan.DCM	11/03/2021 18:40:38
	BiteScan	BiteScan.DCM	11/03/2021 18:41:25

Patient images:			

Comments			
Cr transcrewed on Naturactis implant, iphysio B2, shade			

Restorations			
Types	FDI	Type	Design settings
	25	Screw Retained Crown	Zr veneered Screw Retained Crown
Material	Zirconia - veneered		
Shade	A3		
Manufacturer	Euroteknika		
Connection	NP		
System	Naturall+		

Technical information:			
Order form settings file(s) IDs:	8e530ffe-2884-4a4c-b3df-a5aa00f0c33d_Lyra_Implanto_Lyra_Implanto_V33		
Order form settings file(s):			
Clinic ID:	1850601950		
Scan files	Scan type	File name	Date
	LowerJawScan	LowerJawScan.DCM	9/16/2021 3:42:04 PM
	UpperJawScan	UpperJawScan.DCM	9/16/2021 3:43:43 PM
	BiteScan	BiteScan2.DCM	9/16/2021 3:44:30 PM

NO

A simple comment on the order form ensures that the prosthesis is correctly produced

The correct dimensions of the iPhysio® must be provided. In the "Comments" box, indicate the type of iPhysio® and the exact reference to avoid any confusion.

Preserves the soft tissues

Concave and anatomical, it can be used without removal for **healing, impression and temporization.**



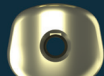
Anatomical prosthetic cradle



Incisors, canines or premolars



Premolars, molars, maxillary central incisors



Molars



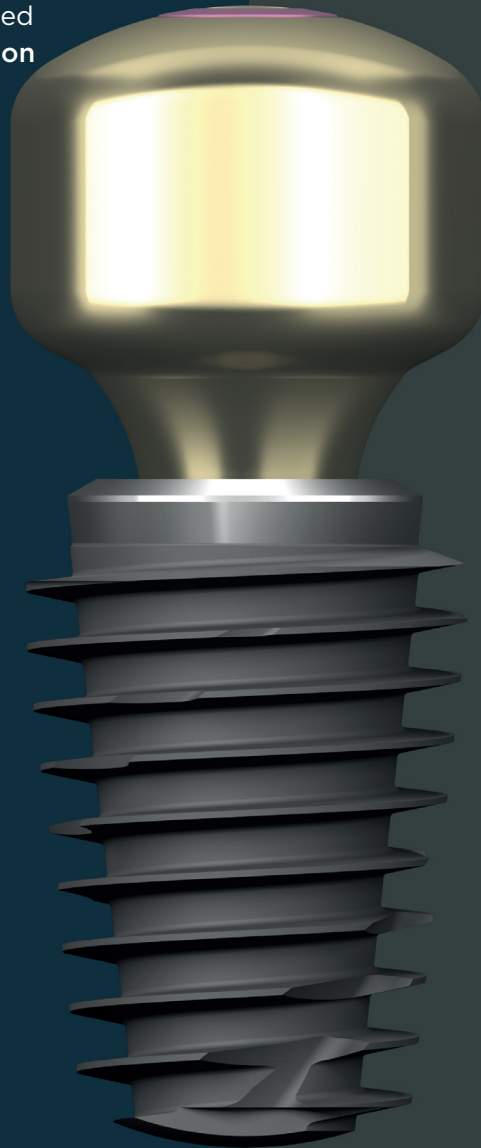
Premolars

UNIVERSAL

- Major implant systems
- All intraoral scanners
- Free library

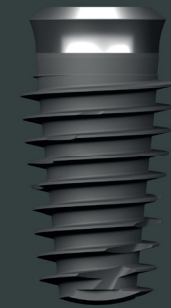
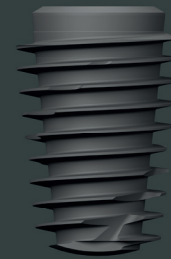
NEW

- CAD on Exocad or 3Shape®

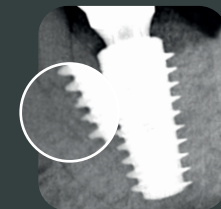


Preserves the bone

Its wide coils, combined with an adapted drilling protocol, provide **bone healing chambers in the implant shaft.**



Day of implant placement



Osseointegration 4 months later



www.iphysisio.dental | info@lyra.dental | Tél. +33(0) 1 76 42 00 60

iPhysisio® Profile Designers and dental implants manufactured by euroteknika are Class IIb medical devices (European Directive 93/42/EEC) in conformity with the standards in force and bearing the CE0459 mark. Not reimbursed by the Social Security, they must be used by oral health professionals. Please read the instructions and the user manual carefully. - Non-contractual photos - Reproduction, even partial, is forbidden

