

iophysio®

THE CODE

EVERYTHING YOU NEED TO KNOW
TO SIMPLIFY YOUR IMPLANT TREATMENT



« SIMPLICITY IS THE ULTIMATE SOPHISTICATION »

Léonard de Vinci

The iPhysio® Profile Designer is the next generation of healing abutment designed and created by etk in 2014. The IPhysio profile designer is the single piece that simplifies all the implant protocol. **This 3 in 1 solution** can be used without removal **for healing, impression and temporization.**



This booklet has been realized with Dr. Legros, Dr Cheylus, Dr Koclejda, and dentists who are members of the Actis Iphysio user club, to share their experiences and tips through clinical cases.



| | |
|---|------|
| 1/ CREATE A STABLE PROSTHETIC BED | P.4 |
| 2/ SUCCESSFUL IMPRESSION | P.6 |
| 3/ PRESERVE THE GINGIVAL PAPILLAE | P.8 |
| 4/ SECURING THE PROSTHETIC ADAPTATION AND THE OCCLUSION | P.10 |
| 5/ TWO ADJACENT IPHYSIO MUST BE SEPARATE.. | P.12 |
| 6/ MAKE A HD PHOTO TO TRANSMIT THE RIGHT INFORMATION | P.14 |
| 7/ COMMUNICATE WELL WITH YOUR LABORATORY | P.16 |
| 8/ SERVE THE RESIN FOR YOUR TEMPORARY PROSTHESIS..... | P.18 |
| 9/ PROSTHESIS AVOID MANIPULATION OF THE SUPRA-IMPLANT PARTS DURING ADJUSTMENT..... | P.20 |
| 10/ USE THE SCREW TO REMOVE THE IPHYSIO® | P.22 |
| 11/ MAINTAIN THE GINGIVAL CRADLE IN THE FINAL RESTORATION | P.24 |

1

CREATE A STABLE
PROSTHETIC BED

YES



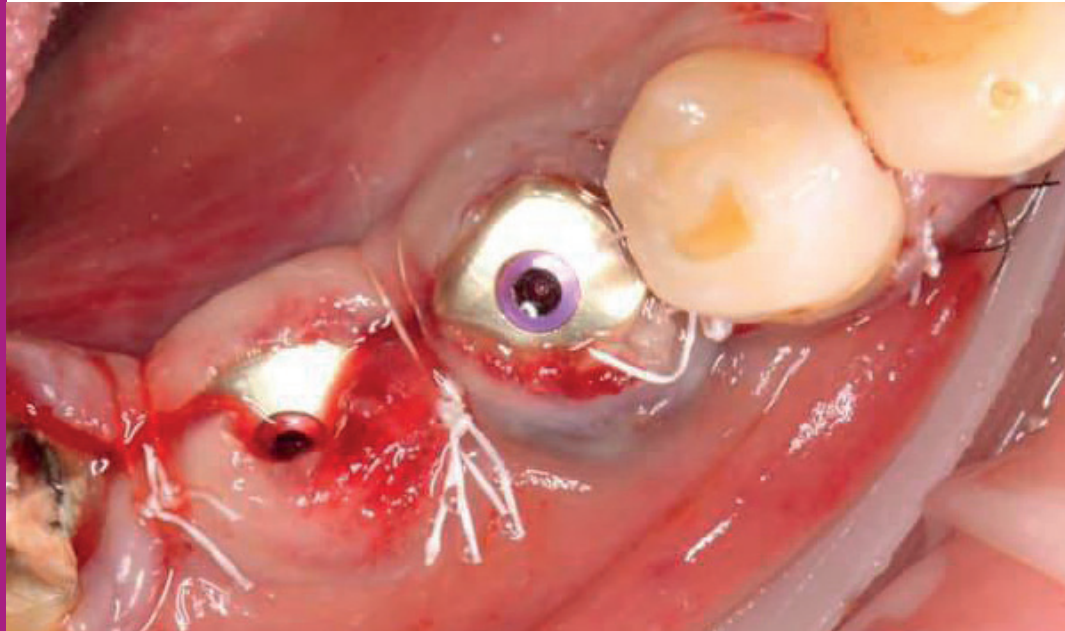
NO

**The vertical positioning of the iPhysio®
Profile Designer determines the prosthetic bed**

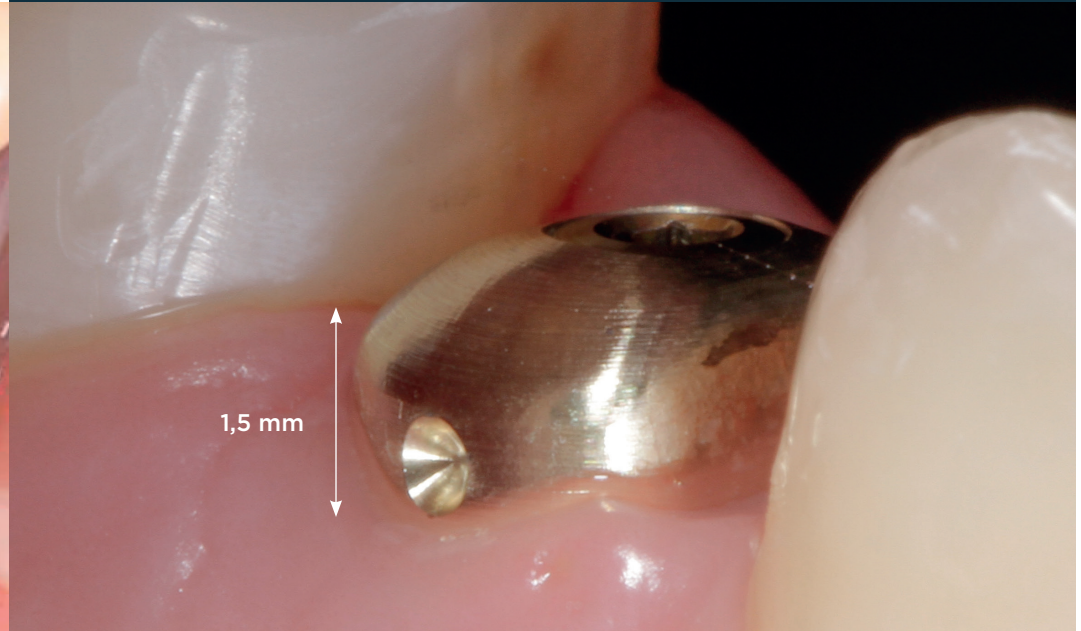
The concave profile of the iPhysio® Profile Designer increases soft tissues and creates a seal for greater bone stability. Its convex profile maintains biological space by supporting the papillae and gingival line.

2

SUCCESSFUL IMPRESSION



YES



NO

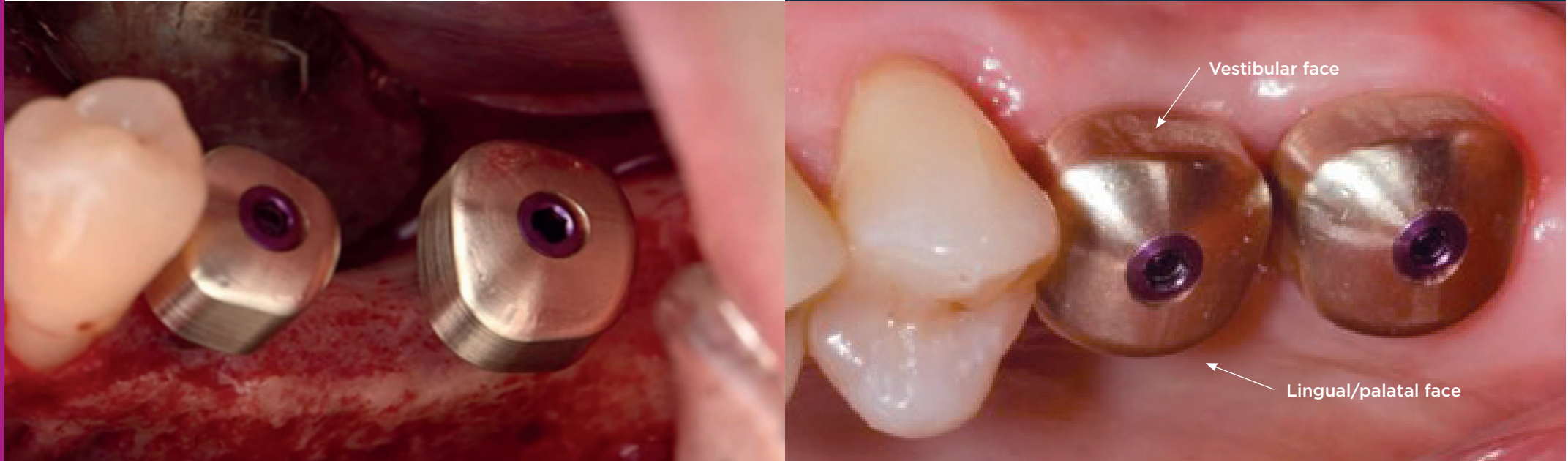
Place at least 1.5 mm above the soft tissues

To ensure the perfect recognition of the iPhysio® by the intra oral scanner, it must not be covered by the tissue during the impression process.

3

PRESERVE THE GINGIVAL
PAPILLAE

YES



NO

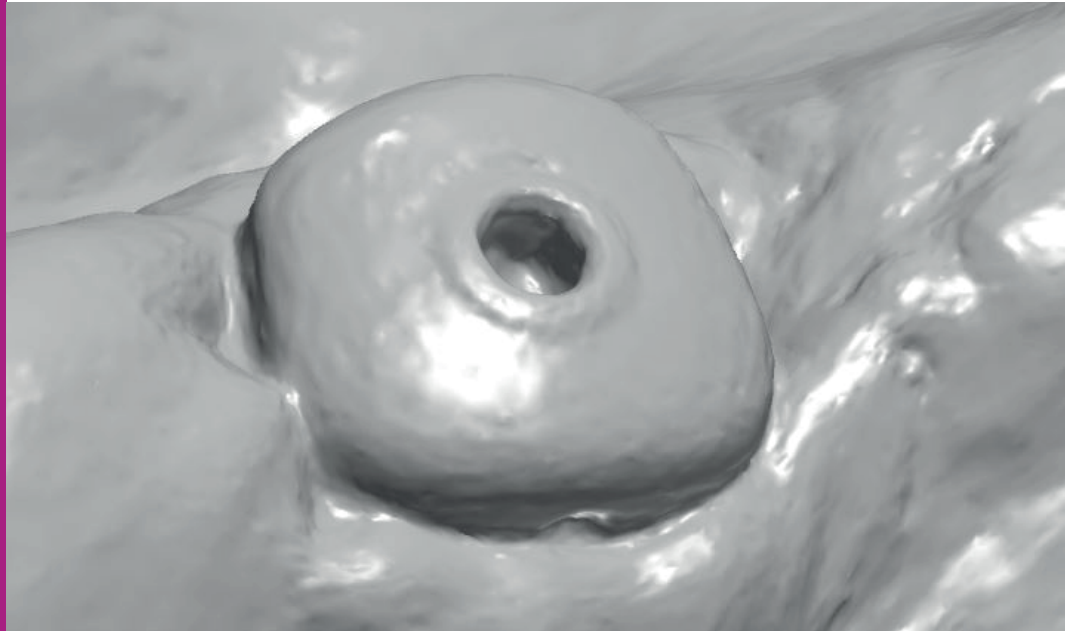
**Preserve the gum papillae through
the correct orientation of the iPhysio®**

The iPhysio® has two different sides, one vestibular, the other lingual/palatal. Positioning correctly the iPhysio® is ideally suited to the natural anatomy of the teeth.

4

SECURING THE PROSTHETIC ADAPTATION AND THE OCCLUSION

YES



NO

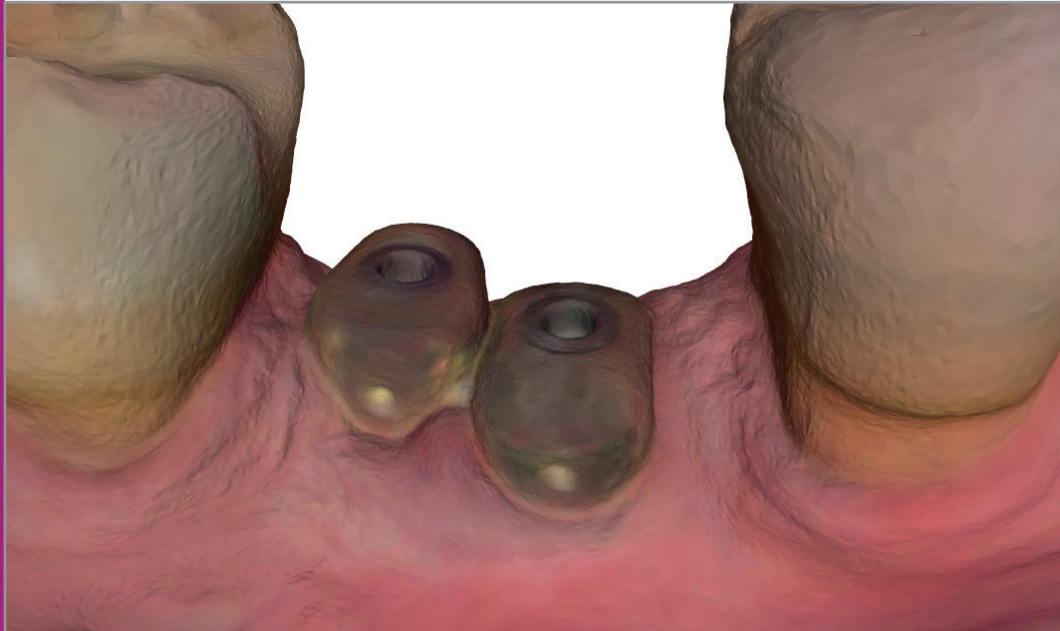
**A smooth surface is the guarantee
of a properly engaged iPhysio®**

To ensure a perfect match between the prosthetic cradle of the iPhysio® and the final restoration, it is strongly recommended to systematically tighten the screw before taking an impression and to check the insertion with a retroalveolar X-ray.

5

TWO ADJACENT IPHYSIO®
MUST BE SEPARATE

YES



NO

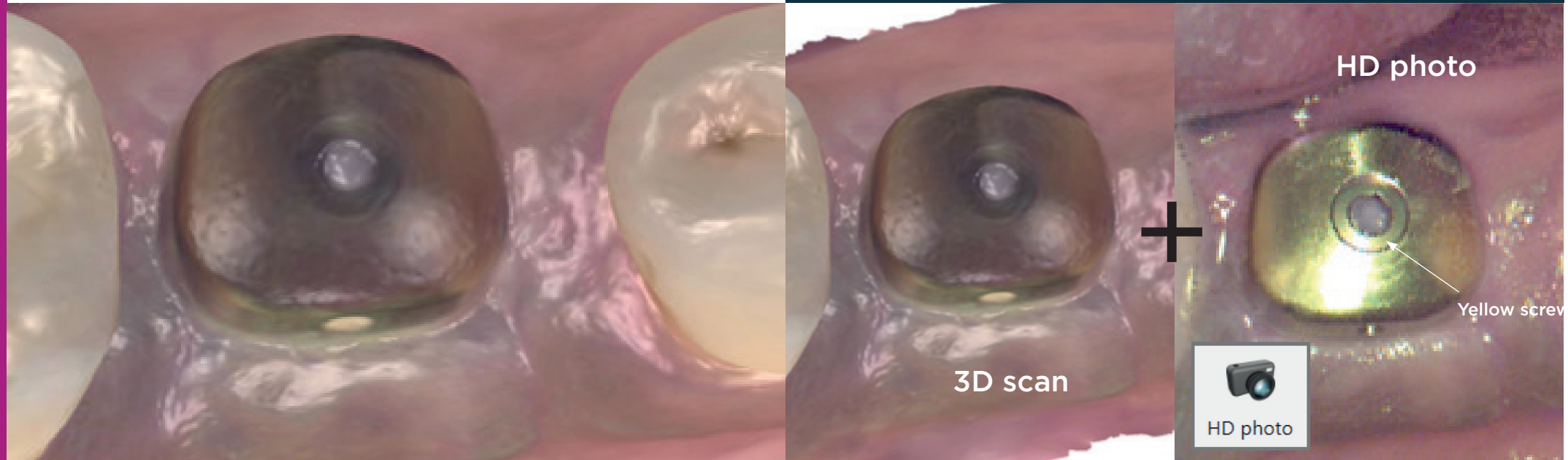
For the CT scan to be able to identify them individually, the iPhysio® must be spaced apart.

If they are in contact, the CT scan confuses them into a single part that cannot be recognized when matching them with the library. This also creates uncertainty as to their correct fit in the implant connectivity.

6

MAKE A HD PHOTO TO TRANSMIT
THE RIGHT INFORMATION

YES




NO

**HD photo, an indispensable
complement to your scan**




The transmission of the correct dimensional information from iPhysio® is essential. An HD photo makes it possible to confirm the colour of the screw and thus avoid any problem of malocclusion in the final prosthesis. In this case, the screw is yellow.

7

COMMUNICATE WELL WITH YOUR LABORATORY

| Restorations | | | |
|--------------|-------------|--|----------------------------|
| Types | FDI | Type | Design settings |
| | 36 |  Screw Retained Crown | AbutmentScrewRetainedCrown |
| Material | Emax | | |
| Shade | A3 | | |
| Manufacturer | Euroteknika | | |
| Connection | NP | | |
| System | Naturall+ | | |


| Technical information: | | | |
|----------------------------------|--|------------------|---------------------|
| Order form settings file(s) IDs: | 8e530ffe-2884-4a4c-b3df-a5aa00f0c33d_Lyra_Implanto_Lyra_Implanto_V33 | | |
| Order form settings file(s): | | | |
| Clinic ID: | 02851 | | |
| Scan files | Scan type | File name | Date |
| | LowerJawScan | LowerJawScan.DCM | 11/03/2021 18:39:53 |
| | UpperJawScan | UpperJawScan.DCM | 11/03/2021 18:40:38 |
| | BiteScan | BiteScan.DCM | 11/03/2021 18:41:25 |

| Patient images: | | | |
|--|--|--|--|
|    | | | |

NO

YES

| Comments | | | |
|---|--|--|--|
| Cr transcrewed on Naturactis implant, iphysio B2, shade | | | |

| Restorations | | | |
|--------------|---------------------|--|----------------------------------|
| Types | FDI | Type | Design settings |
| | 25 |  Screw Retained Crown | Zr veneered Screw Retained Crown |
| Material | Zirconia - veneered | | |
| Shade | A3 | | |
| Manufacturer | Euroteknika | | |
| Connection | NP | | |
| System | Naturall+ | | |

| Technical information: | | | |
|----------------------------------|--|------------------|----------------------|
| Order form settings file(s) IDs: | 8e530ffe-2884-4a4c-b3df-a5aa00f0c33d_Lyra_Implanto_Lyra_Implanto_V33 | | |
| Order form settings file(s): | | | |
| Clinic ID: | 1850601950 | | |
| Scan files | Scan type | File name | Date |
| | LowerJawScan | LowerJawScan.DCM | 9/16/2021 3:42:04 PM |
| | UpperJawScan | UpperJawScan.DCM | 9/16/2021 3:43:43 PM |
| | BiteScan | BiteScan2.DCM | 9/16/2021 3:44:30 PM |

A simple comment on the order form ensures that
the prosthesis is correctly produced

The correct dimensions of the iPhysio® must be provided. In the "Comments" box, indicate the type of iPhysio® and the exact reference to avoid any confusion.

8

SERVE THE RESIN FOR
YOUR TEMPORARY PROSTHESIS



NO

YES



**The temporary abutment allows you to easily remove
the provisional prosthesis when it is once**

To preserve the resin of your temporary prosthesis when you are removing it for adjustments, keep the temporary abutment in its entirety.

9

PROSTHESIS AVOID MANIPULATION
OF THE SUPRA-IMPLANT
PARTS DURING ADJUSTMENT



NO

YES



**A used and sterilized iphysio designer profile is ideal
for finalizing the prosthesis**

Once the provisional prosthesis has been formed, it can be finalised outside the patient's mouth on another iPhysio® Profile Designer that you have sterilised beforehand. This has 2 advantages: you preserve the soft tissue and you do not wear out the abutment clip unnecessarily.

10

USE THE SCREW
TO REMOVE THE IPHYSIO®



NO

YES

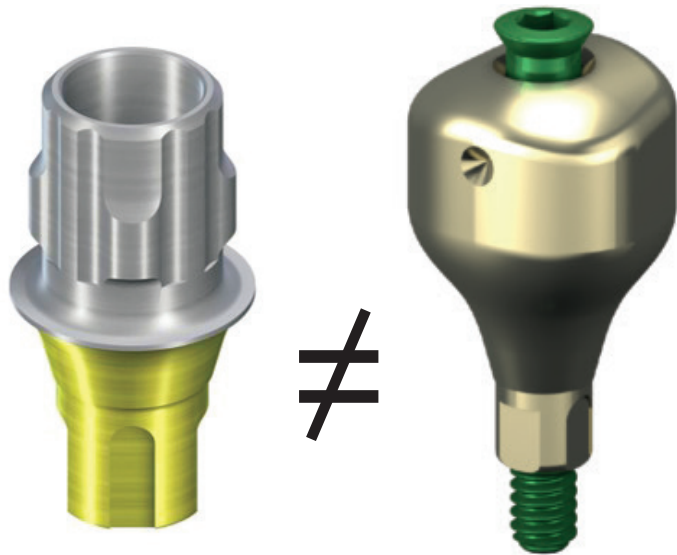


The screw is a good gripper

The iPhysis® has a captive screw. Pull out this screw slightly and use it as a gripper to make it easier to remove the iPhysis®. Thus, you preserve the marginal tissues.

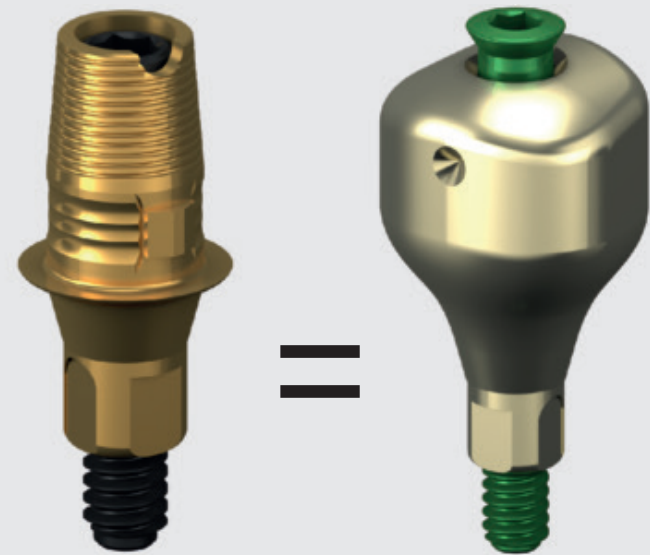
11

MAINTAIN THE GINGIVAL CRADLE
IN THE FINAL RESTORATION



NO

YES



Select a titanium interface with the same emergence profile as the iPhysio® Profile Designer used.

The corresponding interfaces for each iPhysio® Profile Designer in each implant system are listed in our libraries. To preserve the soft tissue and avoid tissue compression, the emergence profile created during the soft tissue healing is retained in the final restoration.

YOUR DISTRIBUTOR

PROFILE DESIGNER



www.iphybio.dental | Team@standarddentalco.com



Manufactured by EUROTEKNIKA SAS - 726 rue du Général de Gaulle, 74700 Sallanches (France)

The iPhybio® Profile Designer is manufactured by EUROTEKNIKA SAS and distributed in the US by EMERGINNOVA LLC. Medical devices of Class I, in compliance with European Regulation MDR (EU) 2017/745 (CE marking) and IIa and IIb medical devices in compliance with European Regulation MDR (EU) 2017/745 (CE 0425 marking) and/or European Directive 93/42/EEC (CE 0459 marking). Devices not reimbursed by National Insurance; they must be used by oral health professionals. Please read the instructions and user manual or operating technique



EMERGINNOVA LLC 936 SW 1 st ave, 975 MIAMI, FL 33130, US

LYRAETK
DIGITAL DENTAL PROTOCOLS

Simple . Safe . Accessible