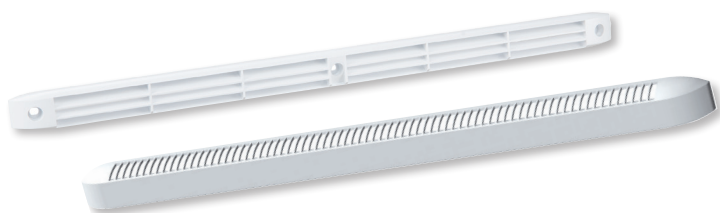
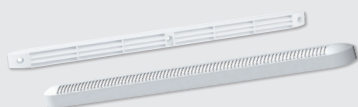


EC-N



Self-regulating air vents, manufactured in white or brown polystyrene. Guaranteeing air renewal in a home through the main rooms (Living room, sitting room and bedrooms). Enabling an airflow of 22, 30 and 45 m³/h. Fitted either to carpentry elements (in openings measuring 354x12 mm) or connected to a wall feedthrough tube. The EC N air vent has a cover that includes an insect grille, available in white or brown.

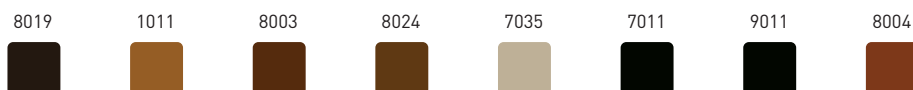
LxWxH (mm): 295 x 20 x 8 (EC-N 22 and 30)
400 x 23 x 12 (EC-N 45)



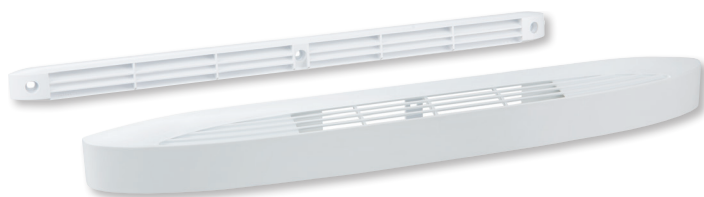
LxWxH (mm): 305 x 20 x 18 (EC-N 22 and 30)
405 x 20 x 18 (EC-N 45)

Model	RAL	Airflow (m ³ /h)	Dn,e,w (ctr)
EC-N 22 White	9016	22	35
EC-N 30 White	9016	30	34
EC-N 45 White	9016	45	33

On request (RAL):



ECA



Self-regulating air vents, manufactured from injection moulded polystyrene and available in three air volume range (22, 30, 36 and 45 m³/h). Fitted in openings measuring 354x12 mm. Suitable for installation on window joinery by crews. The air inlet acoustic element is placed on the indoor side while the cover is fitted on the external side of the joinery. An additional acoustic element can be slot into the air inlet (ECA+RA).

LxWxH (mm): 400 x 23 x 12



LxWxH (mm): 422 x 45 x 45

Model	RAL	Airflow (m ³ /h)	Dn,e,w (ctr)
ECA 22 White	9016	22	39
ECA 30 White	9016	30	39
ECA 36 White	9016	36	38
ECA 45 White	9016	45	37

On request (RAL):

