

HTW

QUALITY COMFORT EVERYWHERE

AQUA RANGE | ELECTRIC WATER HEATER

KOI DUO

***5 YEARS**
WARRANTY
TANK
QUALITY COMMITMENT

3 YEAR
WARRANTY
TOTAL
QUALITY COMMITMENT

B ACS

Design, efficiency and connectivity.

The KOI DUO electric water heater is ideal to be placed in any space thanks to its short depth of 30cm and its easy installation either horizontally or vertically. Its double inner tank allows to supply hot water quickly and constantly, its connectivity via wifi allows to control the consumption from any device and place.



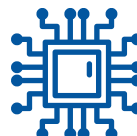
Wi-Fi monitoring

Control of the thermostats from a smartphone or tablet even if the user is not at home.



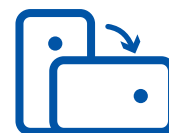
Smart Mode

HTW Koi Duo automatically adapts to the habits of each user, achieving a precise temperature based on actual demand.



Electronic Anode

The low-maintenance electronic anode provides increased corrosion protection during the lifetime of the water heater.



Reversible

Its multi-position installation feature makes it an ideal heater for any space.



Double Tank

Allows you to supply hot water quickly and constantly, reducing consumption.



Notification Ready

The thermostat makes a warning when the desired temperature is reached, achieving greater economic savings and better energy efficiency.



High energy efficiency

The ECO system allows the water heater to work in saving mode, consuming less energy.



Ease of installation

Easy and simple installation thanks to the anchoring system and the simple connection to an electrical outlet.

AQUA RANGE



ELECTRONIC ANODE
LOW MAINTENANCE

ELECTRIC WATER HEATER REVERSIBLE DOUBLE TANK KOI DUO



Double tank

Reversible
installation

Smart mode

Digital touch
screen

Incoloy 840
resistance

Electronic
anode

Anti-freeze
function

Protection
against dry
overheating

High density
polyurethane
insulation

MODEL	HTW-TD-050KOID		HTW-TD-080KOID		HTW-TD-100KOID	
EAN CODE	8435483849723		8435483849730		8435483849747	
Power Supply	V, F, Hz	220-240V (1 Phase ~ 50Hz)				
POWER						
Power	W	1800	1800	1800	1800	
Current	A	7,8	7,8	7,8	7,8	
Declared profile	-	M	M	M	M	
Energy class	-	B	B	B	B	
PERFORMANCE						
Capacity	L	50	80	100	100	
Maximun working pressure	MPa	0,75	0,75	0,75	0,75	
Operating temperature	°C	40~80	40~80	40~80	40~80	
Recovery time 15~40°C	min	91	145	182	182	
Annual electricity consumption	kWh	1312,1	1306,2	1316,5	1316,5	
FEATURES						
Insulation thickness	mm	≈ 30	≈ 30	≈ 30	≈ 30	
Insulation layer material	-	Polyurethane	Polyurethane	Polyurethane	Polyurethane	
Material thickness	mm	1,5	1,8	1,8	1,8	
Coating type	-	Wet enamel	Wet enamel	Wet enamel	Wet enamel	
Degree of protection	-	IPX4	IPX4	IPX4	IPX4	
Number of inner tanks	-	2	2	2	2	
Anode	Type	Electronic	Electronic	Electronic	Electronic	
Number of anodes	-	2	2	2	2	
Resistance	-	Incoloy 840	Incoloy 840	Incoloy 840	Incoloy 840	
Installation type	-	Reversible	Reversible	Reversible	Reversible	
Water inlet pipe	in.	1/2"	1/2"	1/2"	1/2"	
DIMENSIONS AND WEIGHT						
Net dimensions (WxHxD)	mm	516x804x280	556x1009x300	556x1219x300	556x1219x300	
Gross dimensions (WxHxD)	mm	585x907x344	620x1112x364	620x1322x364	620x1322x364	
Net weight	kg	23,7	31,2	36,7	36,7	
Gross weight	kg	26,2	34,3	40,5	40,5	

*5 years warranty on tank
(performing the required maintenance)

HTW reserves all rights to modify models and technical data without prior notice. Information valid except in the case of typographical or printing errors.

Notes: Capacity data under standard conditions. Actual data will vary depending on where the equipment is installed and how it is used. The dimensions of the electrical wiring are approximate, it must be calculated based on the conditions of the installation itself.