

PERCUIL REGATTA RACE CARD. Sunday 24th August 2025





High Water Falmouth 19:04; 5.28m. Low Water Falmouth 13:37; 0.53m.

Read the Notice of Race and Sailing Instructions which take priority over the race card.

First Warning Signal; 15:20. First Preparatory Signal; 15:25.

NB: In view of the low tide at the beginning of the race, it is suggested that competitors should sail close to, or even to the west of, the yellow spherical 5-knot speed limit buoy near the entrance to Froe (Porth) Creek.

Classes: - Sailboards start at 1530hrs then classes start every five minutes as below.
If more than four boats in a class the results will be counted separately.

Flag	Class	Start time	Flag
U	Sailboards	15:30	
B	Picos 2-person/2 sails and 1 person/1 sail	15:35	
T	Handicap dinghies PY1150 and above	15:40	
A	Lasers, Laser Radials and Laser 4.7s	15:45	
H	Gaffers, Shrimpers and St Mawes One Designs	15:50	
F	Handicap dinghies PY1149 and below	15:55	
W	Ajaxes and Piper/Rustlers	16:00	

Start Line	Between mast on Committee boat and distance mark...
Finishing	Opposite direction to start
Turning Mark	Seaward of Committee boat, not a mark when starting or finishing. Leave on same side as other marks of course
Recalls	Second sound signal
Penalties	One 360° turn. (this changes rule 44.1)
Shortened Course	Flag S means proceed to finish (this changes rule 32.2)
Abandonment	Flags N over A
Time limit	No boat timed in after 1800hrs (this changes rule 35)
Protest Time Limit	1815hrs at Percuil Entry table

Safety

- 1) Helm and crew entirely responsible for the own safety, nothing done by the organisers can reduce this responsibility..... if in doubt stay ashore!
- 2) All dinghy sailors must wear a buoyancy aid.
- 3) All boats must be Insured for racing..... minimum £3m cover

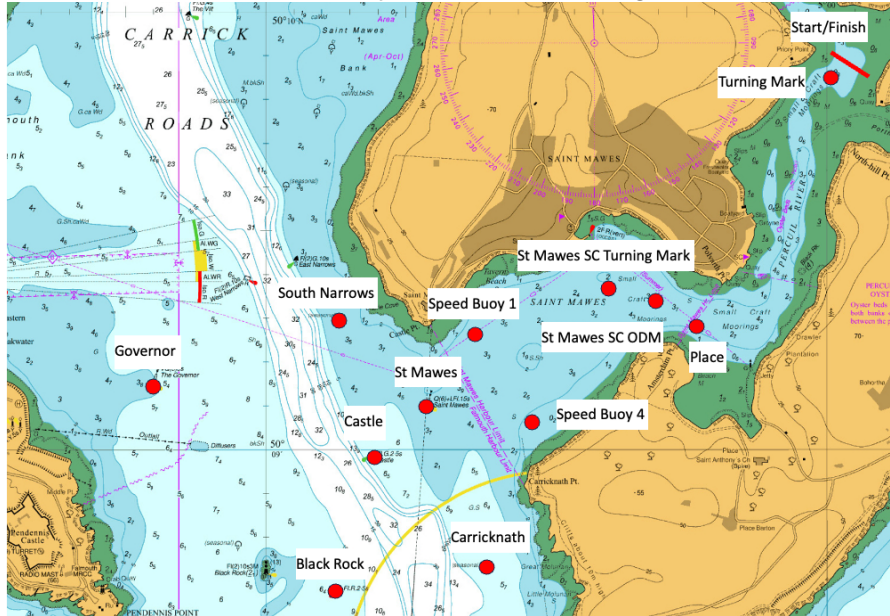
Prize Giving ASAP after racing.

Refreshments on sale after racing including a BBQ

- Courses will be displayed on the Starboard side of the Committee Boat.
- Green Flag means leave all marks to Starboard
- Red Flag means leave all marks to Port and pass in reverse order
- For each class, the course will be selected from the following table:
- The Turning Mark follows the listed marks below except when finishing.

Course number	Course	Number of rounds
1	SB4, SB1	2
2	SB4, Castle	2
3	SB4, St Mawes SC Turning mark.	2
4	Carricknath, Castle	2
5	Carricknath, SB1	2
6	Carricknath, South Narrows	2
7	Black Rock, South Narrows	2
8	Carricknath, Governor	2
9	Black Rock, Governor	2
10	St Mawes SC Turning Mark	2
11	Place	2
12	Place, St Mawes SC ODM	2

St Mawes south cardinal must always be left on its safe navigational side



NB: In view of the low tide at the beginning of the race, it is suggested that competitors should sail close to, or even to the west of, the yellow spherical 5-knot speed limit buoy near the entrance to Froe (Porth) Creek