

# Courses for Classes A, E, U, W, J, H, D, B, C, V & Z

For all courses GREEN or G before the course number means leave all marks to starboard. Red or R before the course number means leave all marks to port and sail the course in reverse order.

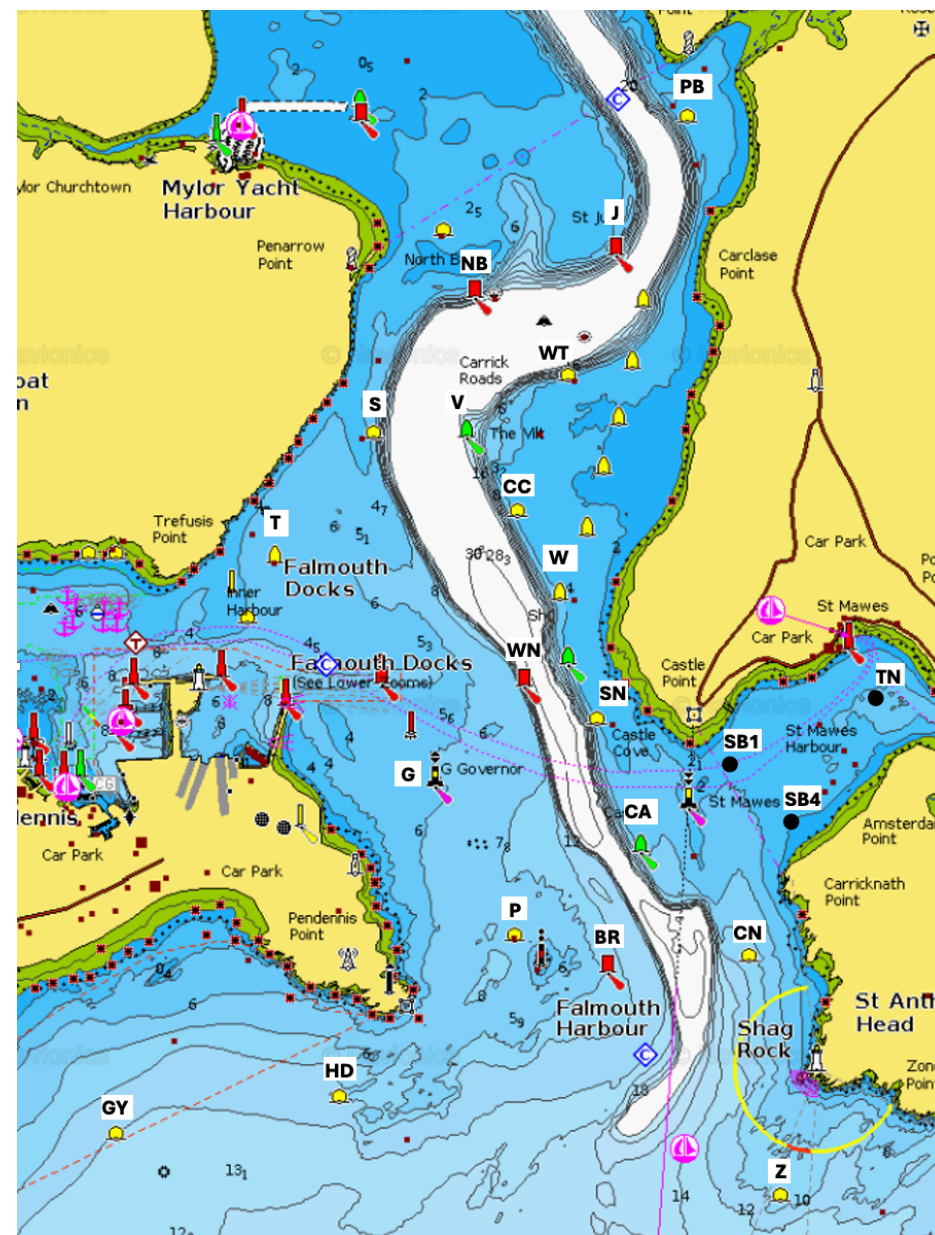
All courses finish at the St Mawes Sailing Club Line

Courses 2 to 15 are one round only

Course No	Full course	Rounds	Course No	Full course	Rounds
1	RO Choice on day by VHF	TBA	9	CN/G/CN/G	1
2	P/W/P/W/P/W	1	10	CN/T/CN/T	1
3	HD/SN/HD/SN	1	11	CN/WN/CN/WN/CN/WN	1
4	CN/HD/SN/HD/G	1	12	BR/T/BR/T	1
5	HD/PB	1	13	CA/V/CA/V	1
6	SB4/P/SB4/P/SB4/P	1	14	BR/V/BR/V	1
7	CN/HD/CN/HD	1	15	P/NB/P/NB	1
8	SB4/G/SB4/G/SB4/G	1			

On the following multi-lap courses, the TURNING MARK (TN) follows the listed marks (and should be left on the SAME side as the rest of the course being sailed) except when finishing.

Course No	Full course	Rounds	Course No	Full course	Rounds
16	P/WT	2	29	CN/BR	3
17	G/WT	2	30	CN/WN	3
18	HD/SN	2	31	CN/CA	4
19	CN/T	2	32	SB4/CA	5
20	BR/T	2	33	SB4/SB1	5
21	BR/V	2	34	BR	3
22	P/NB	2	35	CN/SN	3
23	CA/V	3	36	P	3
24	BR/W	2	37	SB4/G	3
25	GY	2	38	BR/WN	3
26	SB4/G/W	2	39	P/WN	3
27	G/W	3	40	SB4/P	4
28	HD	3	41	P/SN	2



St Mawes Sailing Club 2025  
Race Card for classes A, E, U, W, J, H, D, B, C, V & Z  
Date 2025 04 04

**Course marks**

Abbreviation	Mark	Description	Sponsor
BR	Black Rock Buoy	Red Lateral Mark	
CA	Castle	Green Lateral Mark	
CC	Cream Cornwall	Yellow Spherical	Cream Cornwall
CN	Carricknath	Yellow Spherical	SKB Sails
G	Governor	East Cardinal	
GY	Gylyngvase	Yellow Spherical	Penryn Dental Practice
HD	Headland	Yellow Spherical	Hine Downing
I	Inner Distance Mark (not shown on chartlet)	Flag I	
J	St Just	Red Lateral Mark	
NB	North Bank	Red Lateral Mark	
P	Pendennis	Yellow Spherical	Super Yacht Services
PB	Pasco's Boatyard	Yellow Spherical	Pasco's Boatyard
S	Sunbeam	Yellow Spherical	Mylor Yacht Harbour
SD	Outer Distance Mark (not shown on chartlet)	Flag D	
SN	South Narrows	Yellow Spherical	A2 Rigging and Covers
St Mawes buoy	St Mawes buoy	South Cardinal	
SB1	Speed limit buoy One (see note below)	Yellow Spherical	
SB4	Speed limit buoy Four (see note below)	Yellow Spherical	
T	Trefusis	Truncated cone with X topmark	Penrose Sailmakers
TN	Turning Mark for all classes other than T&R	Flag T (blue cone)	
V	Vilt	Green Lateral Mark	
W	Waterloo	Truncated cone with X topmark	Mylor Chandlery and Rigging
WN	West Narrows	Red Lateral Mark	
WT	Water Tower	Yellow Spherical	Ancasta
Z	Zone	Yellow Spherical	Falmouth Boat Co

**Speed Limit buoys**

In the entrance to St Mawes Bay there are four speed limit buoys, each of which is marked **8 KNOTS**. For the purposes of racing at StMSC they will be designated as follows (from the most north-western to the most south-eastern): SB1, SB2, SB3 and SB4 (although they are not marked as such).

**Aide Memoire for Competitors**

<b><u>This aide memoire for competitors must be read together with the full Notice of Race &amp; Sailing Instructions. Copies available in the Clubhouse and Website.</u></b>	
Radios	The Race Officer will broadcast courses on VHF ChM2/P4.
Starting Signals	By sound signal. (Optional class letter board <b>RED/GREEN</b> + Course Number on club balcony.)
Courses	GREEN or G preceding the announced course means leave all marks to starboard. Red or R preceding the announced course means leave all marks to port and sail the course in reverse order
Turning Mark	Turning Mark (TN) is positioned just to the SW of the middle of the Start/Finish line. Leave on the same side as the rest of the course being sailed.
Combined Starts	When two or more classes start together, they may sail different courses and their results will be counted separately.
Starting Line	Transit through yellow poles on Quay and Club roof, and between IDM (Flag I) and ODM (Flag D) except Working Boats who start between ODM and Quay wall.
Starting Penalties	Boats "On Course Side" at starting signal must comply with RRS 29.1: i.e. return to "Pre-Start Side" (do not need to go round ends). In Pursuit Races must take a time penalty.
Individual Recall	One additional sound signal and <b>ORANGE</b> flashing light.
General Recall	Two additional sound signals and <b>GREEN</b> flashing light. Class restarts last.
Change Course	On VHF with one sound signal and flashing GREEN light., with optional letter & number. Sail full number of rounds of the new course in addition to rounds of original course.

Shorten Course	On VHF with two sound signals and flashing <b>ORANGE</b> light. Go through finish line.
Finish Line	As start line but between IDM & ODM, in the opposite direction to the start.
Time Limits	1330 in morning races; 1600 in the Philleigh Pots first race; 1630 in the Victory Cups; 2030 (1945 in September) in evening races; 120 minutes after each class's start in the second race of the Philleigh Pots. If one boat in a class finishes within the time limit, then the time limit for that class will be 30 minutes after the finish time of the first boat. Boats which finish outside the time limit will be scored DNF.
DNF	A boat starting later than 9 minutes after her starting signal will be scored DNF.

**Times of Races**

<b>Summer Sunday and Thursday Series</b>				
Flag	Time	Sundays	Thursdays	Victory Cups
	Warning Signal	1020	1810	1230
	Preparatory Signal	1025	1815	1235
	<b>Start Time as follows</b>			
A (or E&U)	Handicap Yachts	1030	1820	1240
W	Ajax	1035	1825	1245
J	Rustler / Piper	1040	1830	1250
H/T/R	Shrimper/Fast/Slow Handicap Dinghies	1045	1835	1255
D	St Mawes One Designs	1050	1840	1300
<b>FWB &amp; Sunbeams</b> (Thursdays -26 June to 8 Aug and 28 August to 18 September)				
B	Falmouth Working Boats		1845	1305
V	Sunbeams		1850	
C	Small FWB			1310
<b>Apart from the Victory Cups large and small working boats (B&amp;C) will race together.</b>				

<b>Spring Series: including May Day Cups Race</b>				
Class		<b>Sundays</b> (Incl May Day Cups Race)	<b>Thursdays</b>	
	Warning Signal	1020	1820	
	Preparatory signal	1025	1825	
A (or E&U) /W/H/D	Start for Handicap Yachts, Ajax, Shrimper, SMOD	1030	1830	
J	Start for Rustler/Piper	1035	1835	
T/R	Start for Dinghies T/R	1040	1840	

<b>Philleigh Pots. First race timings:</b> <b>Ajax: Warning Signal 1350, Preparatory Signal 1355, Start 1400.</b> <b>Rustler / Piper: Warning Signal 1355, Preparatory Signal 1400, Start 1405.</b> <b>Second Race to start asap after finish of first Race.</b>
---

<b>Early Bird and Autumn Pursuit Series Sundays and Thursdays</b>			
Class		Sundays	Thursdays
Z	First Pursuit Start	1030	1820
Individual start times for class Z Pursuit Race will be published in the Clubhouse and on the Website. There will be no racing for dinghies in the Early Bird and Autumn Pursuit series.			

<b>St Mawes Sailing Club 2025</b> <b>Race Card for classes A, E, U, W, J, H, D, B, C, V &amp; Z</b> Date 2025 04 04
---