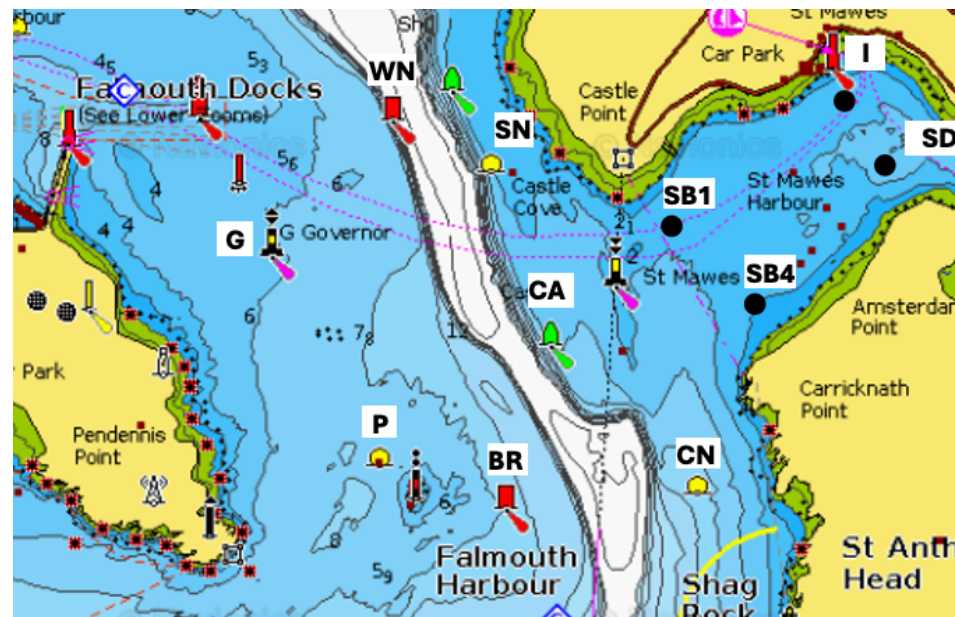


Courses for classes T&R (i.e. dinghies) will be selected from the following list:

Course number	On the following multi-lap courses, the Outer Distance Mark (displaying Flag D) follows the listed marks (and should always be left to STARBOARD)	Number of rounds
29	Carricknath, Black Rock	3
30	Carricknath, West Narrows	3
31	Carricknath, Castle	4
32	SB4, Castle	5
33	SB4, SB1	5
34	Black Rock	3
35	Carricknath, South Narrows	3
36	Pendennis	3
37	SB4, Governor	3
38	Black Rock, West Narrows	3
39	Pendennis, West Narrows	3
40	SB4, Pendennis	4
41	Pendennis, South Narrows	2
42	Carricknath, SB1	4
43	Carricknath, Governor	2
44	Carricknath, Pendennis	3
45	Black Rock, Castle	5
46	Black Rock, South Narrows	3
47	Black Rock, SB1	3
48	SB4, Black Rock	5
49	Castle, South Narrows	3
50	Castle, SB1	5
51	Castle, Governor	3
52	Black Rock, Governor	2
53	Castle, West Narrows	3
54	Castle	5



Course marks

Abbreviation	Mark	Description	Sponsor
BR	Black Rock Buoy	Red Lateral Mark	
CA	Castle	Green Lateral Mark	
CN	Carricknath	Yellow Spherical	SKB Sails
G	Governor	East Cardinal	
I	Inner Distance Mark	Flag I	
P	Pendennis	Yellow Spherical	Super Yacht Services
SD	Outer Distance Mark	Flag D	
SN	South Narrows	Yellow Spherical	A2 Rigging and Covers
St Mawes buoy	St Mawes buoy	South Cardinal	
SB1	Speed limit buoy One (see note below)	Yellow Spherical	
SB4	Speed limit buoy Four (see note below)	Yellow Spherical	
WN	West Narrows	Red Lateral Mark	

Speed Limit buoys

In the entrance to St Mawes Bay there are four speed limit buoys, each of which is marked **8 KNOTS**. For the purposes of racing at StMSC they will be designated as follows (from the most north-western to the most south-eastern): SB1, SB2, SB3 and SB4 (although they are not marked as such).

St Mawes Sailing Club 2024
 Race Card for classes T & R
 Date 2024 05 22

Aide Memoire for Competitors

	<u>This aide memoire for competitors must be read together with the full Notice of Race & Sailing Instructions. Copies available in the Clubhouse and Website.</u>
Starting Signals	By sound signal with class letter board RED/GREEN + Course Number on club balcony. When a Class letter on a GREEN background is displayed leave all marks to starboard. When a RED Class letter on a White background is displayed leave all marks to port and sail the course in reverse order.
St Mawes Cardinal	If any leg of the course requires boats to pass St Mawes cardinal mark (Lugo), it must be passed on its safe navigational side.
Starting Line	Transit from yellow poles on Quay and Club roof, and between IDM (Flag I) and ODM (Flag D).
End of each lap	The Outer Distance Mark (displaying Flag D) follows the listed marks (and should always be left to STARBOARD)
Starting Penalties	Boats "On Course Side" at starting signal must comply with RRS 29.1: i.e. return to "Pre-Start Side" (do not need to go round ends).
Individual Recall	One sound signal and ORANGE flashing light.
General Recall	Two sound signals and GREEN flashing light. Class restarts last.
Change Course	One sound signal and flashing GREEN light, letter & number displayed on balcony. Sail full number of rounds of the new course in addition to rounds of original course.
Shorten Course	Two sound signals and flashing ORANGE light. Go through finish line.
Combined Starts	Classes T & R will start together but they may sail different courses and their results will be counted separately.
Finish Line	As start line, between IDM & ODM, but in the opposite direction.
Time Limits	1330 in morning races; 1700 in the Philleigh Pots first race; 1630 in the Victory Cups; 2030 (1945 in September) in evening races; 150 minutes after each class's start in the second races for the May Day Cups, Coronation Regatta, Spring Regatta and the Philleigh Pots. If one boat in a class finishes within the time limit, then the time limit for that class will be 30 minutes after the finish time of the first boat. Boats which finish outside the time limit will be scored DNF.
DNF	A boat starting later than 9 minutes after her starting signal will be scored DNF.

Times of Races

Summer Sunday and Thursday Series				
Flag	Time	Sundays	Thursdays	Victory Cups
	Warning Signal	1020	1810	1230
	Preparatory Signal	1025	1815	1235
	Start Time as follows			
A (or E&U)	Handicap Yachts	1030	1820	1240
W	Ajax	1035	1825	1245
J	Rustler / Piper	1040	1830	1250
H/T/R	Shrimper/Fast/Slow Handicap Dinghies	1045	1835	1255
D	St Mawes One Designs	1050	1840	1300
FWB & Sunbeams (Thursdays -27 June to 8 Aug and 29th August to 19th September)				
B	Falmouth Working Boats		1845	1305
V	Sunbeams		1850	
C	Small FWB			1310
Apart from the Victory Cups large and small working boats (B&C) will race together.				

Spring Series: including May Day Cups Race			
Class		Sundays (Incl May Day Cups Race)	Thursdays
	Warning Signal	1020	1820
	Preparatory signal	1025	1825
A (or E&U) /W/H/D	Start for Handicap Yachts, Ajax, Shrimper, SMOD	1030	1830
J	Start for Rustler/Piper	1035	1835
T/R	Start for Dinghies T/R	1040	1840

Bomber Holm Race this will be the first Race of the Sunbeam Championships
Philleigh Pots. Second Race to start asap after finish of first Race. Ajax: Warning Signal 1350, Preparatory Signal 1355, Start 1400. Rustler / Piper: Warning Signal 1355, Preparatory Signal 1400, Start 1405.

Early Bird and Autumn Pursuit Series Sundays and Thursdays

Class		Sundays	Thursdays
Z	First Pursuit Start	1030	1820
Individual start times for class Z Pursuit Race will be published in the Clubhouse and on the Website. There will be no racing for dinghies in the Early Bird and Autumn Pursuit series.			

St Mawes Sailing Club 2024
Race Card for classes T & R
Date 2024 05 22