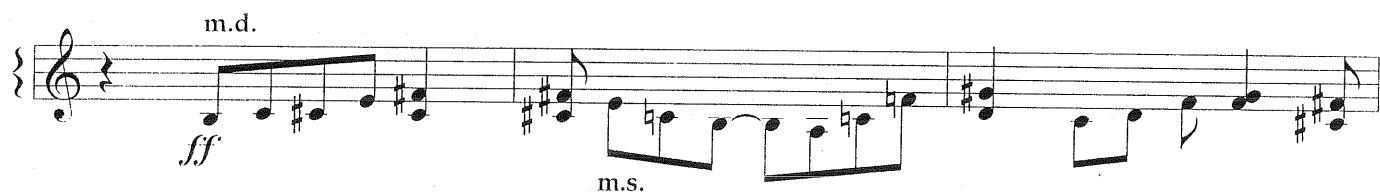
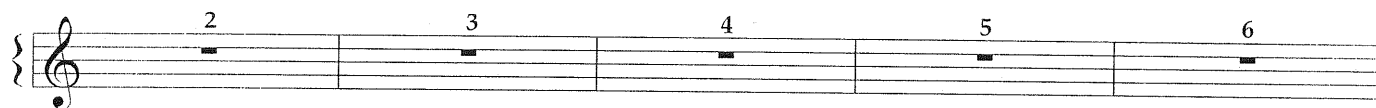


EVENING MUSIC

from Sonata "Seasons of the Day and the Night"
for piano

Ze'ev BITKIN
Op. 9, N1

Vivo
feroce



ff

m.d.

m.s. *m.d.* *m.s.*

m.d. *m.s.*

m.s. *m.d.* *m.s.*

First system of a musical score. The treble clef staff contains a melodic line with a slur and a fermata over the final two notes, marked with a hairpin crescendo *8va*. The bass clef staff contains a bass line with a slur and a fermata over the final two notes, marked with a hairpin crescendo *m.d.*. A dynamic marking *m.s.* is placed between the staves.

Second system of a musical score. The treble clef staff contains a melodic line with a slur and a fermata over the final two notes. The bass clef staff contains a bass line with a slur and a fermata over the final two notes.

Third system of a musical score. The treble clef staff contains a melodic line with a slur and a fermata over the final two notes. The bass clef staff contains a bass line with a slur and a fermata over the final two notes. A dynamic marking *m.s.* is placed below the bass staff.

Fourth system of a musical score. The treble clef staff contains a melodic line with a slur and a fermata over the final two notes. The bass clef staff contains a bass line with a slur and a fermata over the final two notes, marked with a hairpin crescendo *m.d.*.

Fifth system of a musical score. The treble clef staff contains a melodic line with a slur and a fermata over the final two notes, marked with a hairpin crescendo *8va*. The bass clef staff contains a bass line with a slur and a fermata over the final two notes, marked with a hairpin crescendo *m.d.*.